



Tonga Climate Update & Climate Outlook

February - April 2026



Issued: 22 January 2026

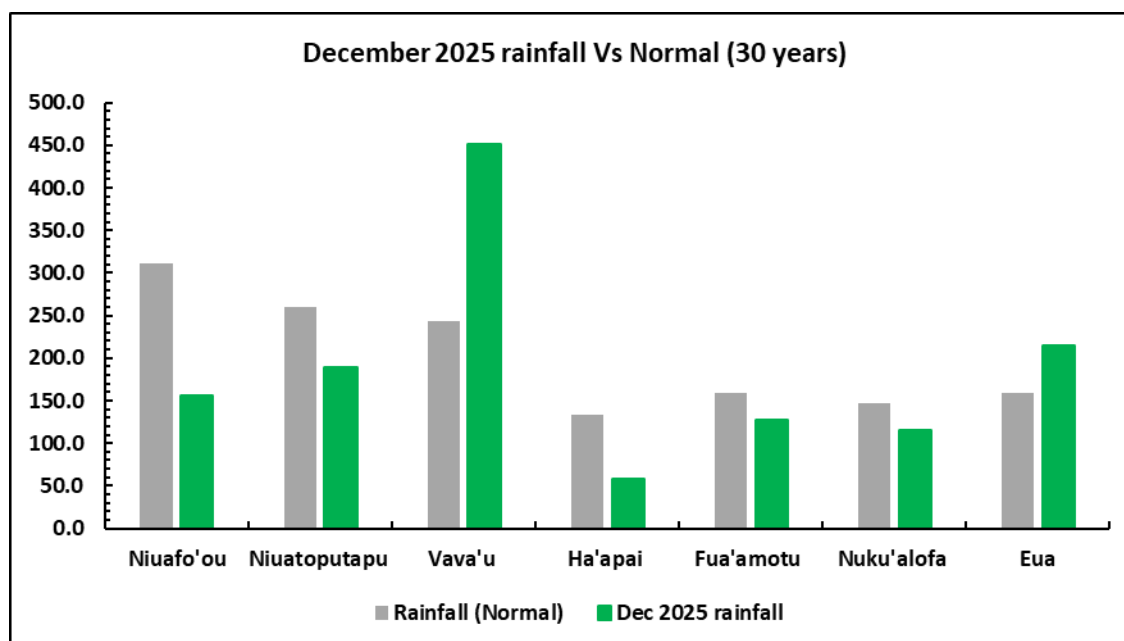
Recent - December 2025

- Above average rainfall was received in 'Eua & Vava'u, while below average rainfall was received across Tongatapu, Ha'apai and the Niua in December. Refer to Table 1 & graph below.
- The highest 24 hour rainfall was 117 mm recorded at in 'Eua on the 7th.
- The mean air temperature was 26.5⁰C which was on average.
- Highest maximum temperature was 35.5⁰C recorded at Nomuka on the 30th. This is the highest maximum temperature recorded for any December on record since 35.0⁰C recorded in 2009 in Niuafo'ou.
- Lowest minimum temperature was 18.0⁰C recorded in 'Atele on the 28th.

Table 1.

Rainfall totals (mm) for the last six months, July to December 2025						
	July	August	September	October	November	December
Niuafo'ou	57.0	67.5	112.5	69.5	374.0	155.5
Niutopotapu	72.0	7.0	102.3	56.5	466.2	189.0
Vava'u	127.1	19.6	112.3	81.1	342.3	451.5
Ha'apai	77.4	59.8	65.1	166.5	181.8	57.8
Fua'amotu	83.6	225.2	20.3	79.7	370.4	127.8
Nuku'alofa	54.0	208.5	37.0	151.0	334.0	115.0
'Eua	82.1	214.0	50.4	171.0	277.1	214.3
Below normal		Normal (usual)			Above normal	

Figure 1.



Temperatures & Rainfall for the main islands for the last 13 months

Relevance to sectors:

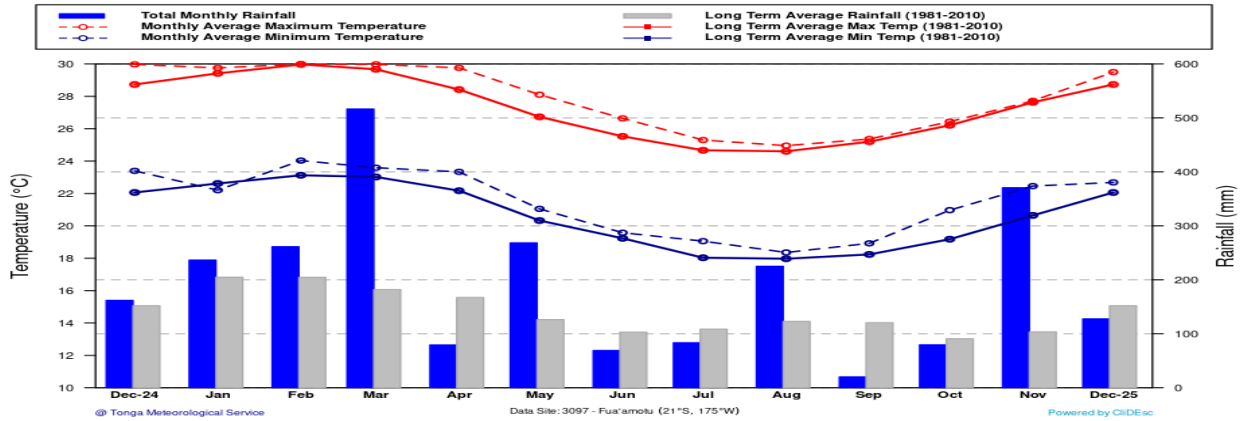


- Drier than average conditions has been observed across most of Tonga in December. Care in usage of water is advised especially in smaller islands of Ha'apai and the Niuas.

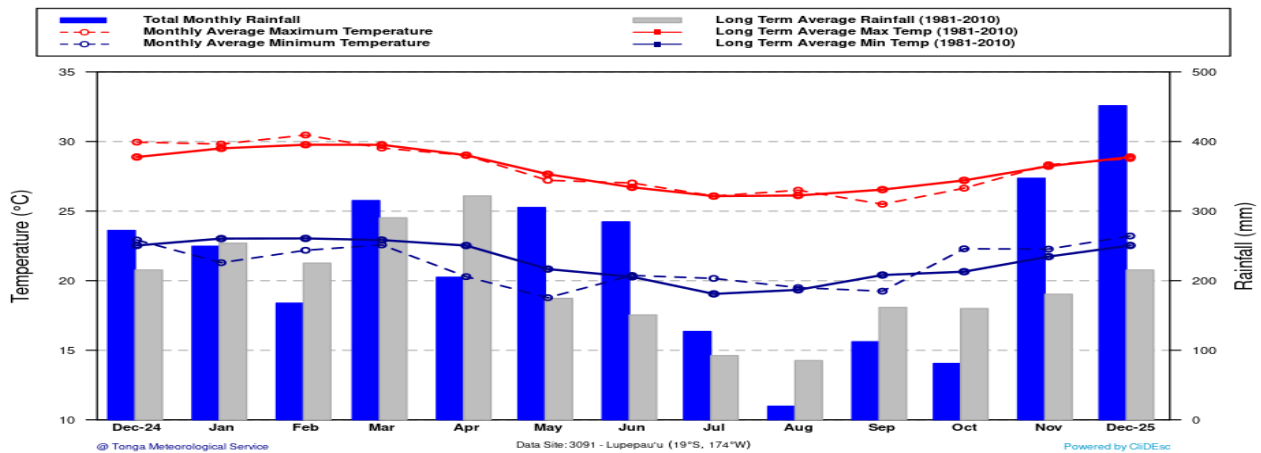


- Soils would be very drier than average in most places in Tonga during December and into January. Farmers are advised to please take precaution measures of suitable conditions for their farming practices.

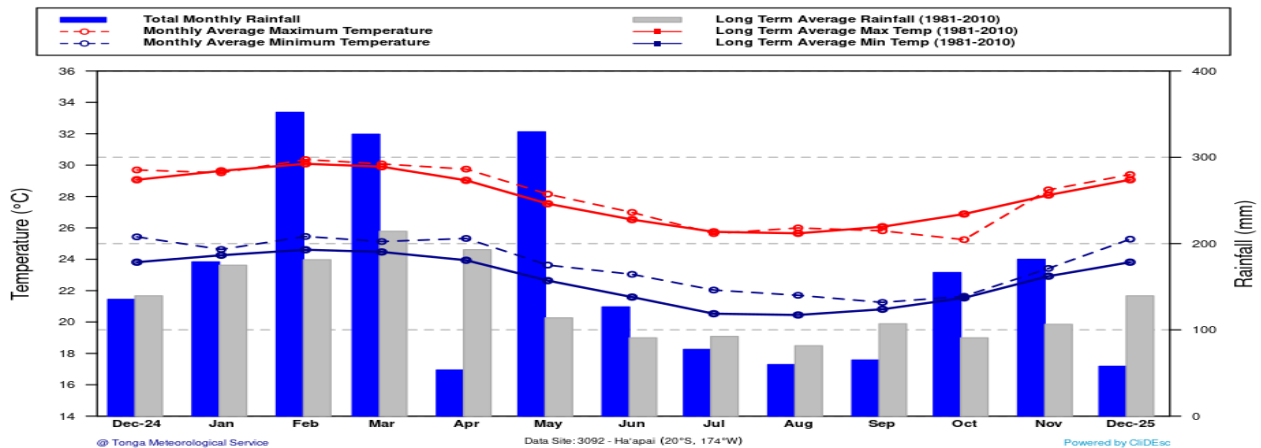
Fua'amotu (3097) - Temperature & Rainfall for the last 13 Months
(December, 2024 - December, 2025)



Lupepau'u (3091) - Temperature & Rainfall for the last 13 Months
(December, 2024 - December, 2025)



Ha'apai (3092) - Temperature & Rainfall for the last 13 Months
(December, 2024 - December, 2025)

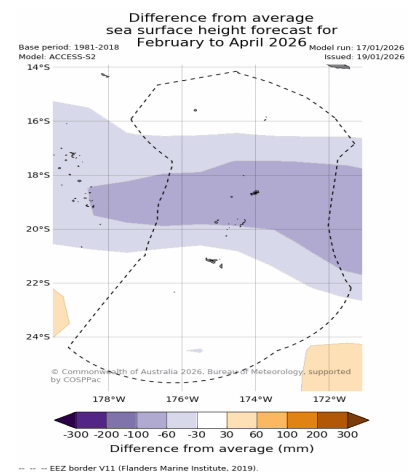
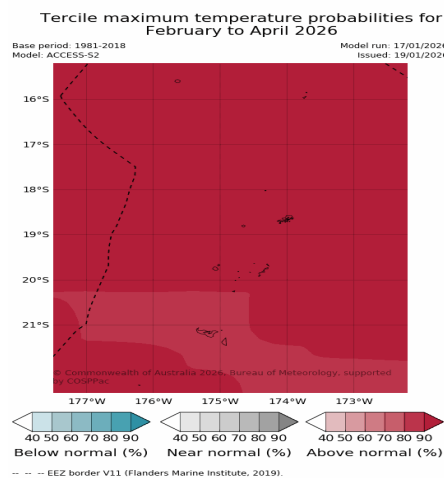
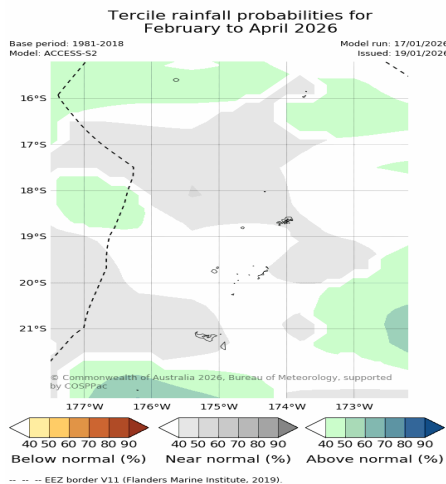


Climate outlook for February to April 2026

- The rainfall outlook generally indicates normal to be most likely for the forecast period.
- Warmer than average maximum air temperature to continue across the country.
- The outlook shows below normal Sea Surface Height (SSH) across Tonga waters.
- Weak La Niña conditions remains in place in the tropical Pacific but a return to ENSO neutral in the next 1-3 months.

Table 2. Rainfall Outlook, February — April 2026

Location	Rainfall Outlook February — April 2026		% Chance (This is the % chance that this outlook will occur).
Niuafo'ou	Normal	723 mm – 937mm	40 - 50
Niutoputapu	Normal	691mm – 840mm	40 - 50
Vava'u	Normal	713mm – 954mm	40 - 50
Ha'apai	Normal	567mm – 718mm	40 - 50
Fua'amotu	Normal	505mm – 790mm	40 - 50
Nuku'alofa	Normal	551mm – 735mm	40 - 50
'Eua	Normal	505mm – 790mm	40 - 50



Traditional knowledge indicators for Tropical Cyclone forecasting.

- Fruit trees unusually bearing plenty of fruits especially mangoes and breadfruit indicates alert people of a possible cyclone to happen that year. Currently, fruits are hardly bearing fruits.
- Bees nesting lower near the ground and inside empty cococut shells to hide from cyclones. Currently, bees are seen to nest in the open, meaning no sign of cyclone yet.
- Spiders normally nest in closed areas where it is safe, as seen now spiders are making their web in the open meaning no sign yet of a coming cyclone.
- Young shoots of banana leaves bending is a sign to alert people of a possible cyclone. This sign is not seen yet.
- Frigate birds hunting inland but it is not normal for them to come inland, this is a sign that usually alert people of a possible cyclone. We have not seen flock of frigate birds inland these days.
- When flowers start to bloom especially the indigenous flowers then it is a sign that warm weather is Approaching.
- Cockroaches are seen flying in the house is a sign that rain is coming soon.

Tongan Calendar and traditional knowledge:

Parts of Vaimui, Faka'afumo'ui, Faka'afumate (February to April)

The rainy season most welcomed by farmers but latter half of the season when winds and rain are too much then it becomes problematic to farmers when strong winds and too much rain can cause damage to plantation especially yams and other root crops.

Note:

The Wet Season started on 1st November 2025 and will last till end of April 2026. It is also called the Cyclone Season. On average, during this period Tonga receive average to above average rainfall.

According to the current status, the previous 3 months rainfall and rainfall outlook (Refer Table1), it is advised to collect water when it rains and use it wisely, this goes to all of Tonga islands. The public are advised to ensure that you stay alert at all times and get the latest weather forecast and warnings from the Met service. It is also advisable to seek advice from relevant authorities of sensitive sectors, e.g. Agriculture, Water, Health and the National Disaster Risk Management Office (NDRMO) on the best practices to save lives and property and minimize the effects of natural disaster.

The next Climate update will be issued second week of February 2026 or earlier

Disclaimer:

This summary is prepared as soon as possible following the end of the month, once climate data is received from recording stations around Tonga. Delays in data collection, communication and processing occasionally arise. While every effort is made to verify observational data, the Tonga Meteorological Service makes no statements, representations, or warranties about the accuracy or completeness of, and you should not rely on, any information contained in this report. Despite our best efforts, TMS makes no warranties that the information in this publication is free of numerical errors. TMS disclaims all responsibility and all liability (including without limitation, liability in negligence) for all expenses, losses, damages and costs you might incur as a result of the information being inaccurate or incomplete in any way, and for any reason. This information should be used as a guidance only. For further information about this forecast should be directed to the Director of the Tonga Meteorological Service, at P.O. Box 1380, Nuku'alofa. Or email at metstaff@met.gov.to Tel: (676) 0800638/ 7400062 or our website: <http://www.met.gov.to> for more information.