



## Tonga Climate Update & Climate Outlook



March - May 2026

Issued: 11 February 2026

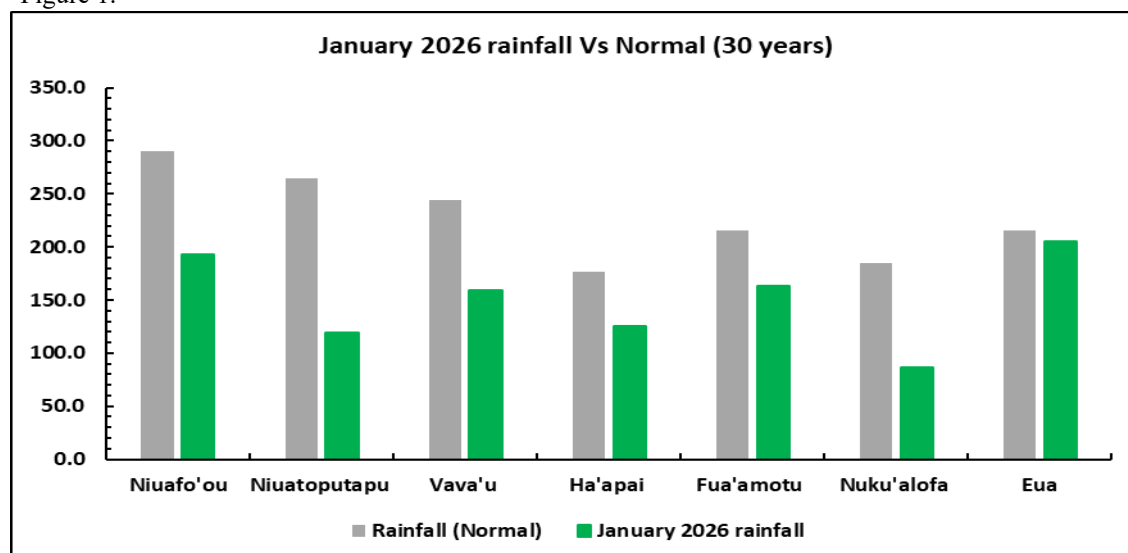
### Recent - January 2026

- Average to near average rainfall was recorded in 'Eua, Fua'amotu and Ha'apai, while below average rainfall was received in Vava'u and the Niuas. Refer to Table 1 & graph below.
- The highest 24 hour rainfall was 61.0 mm recorded in Longomapu, Vava'u on the 12<sup>th</sup>.
- The mean air temperature was 28.0°C which was 1.1°C warmer than average.
- Highest maximum temperature was 36.7°C recorded at Nomuka on the 8<sup>th</sup> and 9<sup>th</sup>. This is the highest maximum temperature recorded for any January on record. The next highest temperature was 34.6°C recorded in Nuku'alofa on the 22<sup>nd</sup>. This is the highest January maximum temperature recorded in Nuku'alofa since its record started.
- Lowest minimum temperature was 18.5°C recorded in 'Atele on the 1<sup>st</sup>.

Table 1.

Rainfall totals (mm) for the last six months, August 2025 to January 2026						
	August	September	October	November	December	January
Niuafo'ou	67.5	112.5	69.5	374.0	155.5	192.5
Niuaatoputapu	7.0	102.3	56.5	466.2	189.0	118.8
Vava'u	19.6	112.3	81.1	342.3	451.5	158.9
Ha'apai	59.8	65.1	166.5	181.8	57.8	125.6
Fua'amotu	225.2	20.3	79.7	370.4	127.8	162.9
Nuku'alofa	208.5	37.0	151.0	334.0	115.0	86.5
'Eua	214.0	50.4	171.0	277.1	214.3	205.0
Below normal		Normal (usual)			Above normal	

Figure 1.



# Temperatures & Rainfall for the main islands for the last 13 months

## Relevance to sectors:

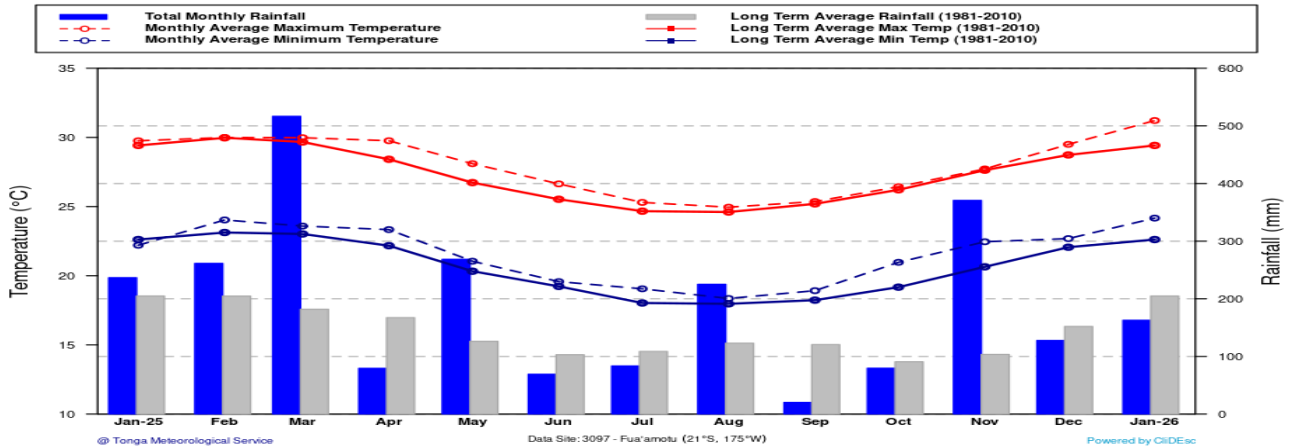


- Drier than average conditions has been observed across most of Tonga in December except Vava'u where above average rain was received. Below average rain was also received across Tonga in January. Care in usage of water is advised especially in smaller islands of Ha'apai and the Niuas.

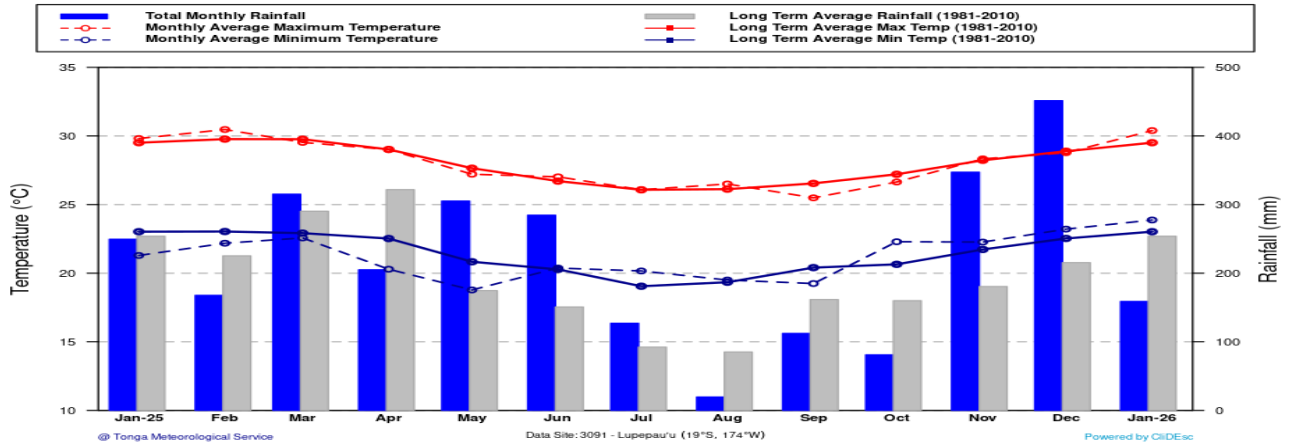


- Soils would be very drier than average in most places in Tonga during December and into January. Farmers are advised to please take precaution measures of suitable conditions for their farming practices.

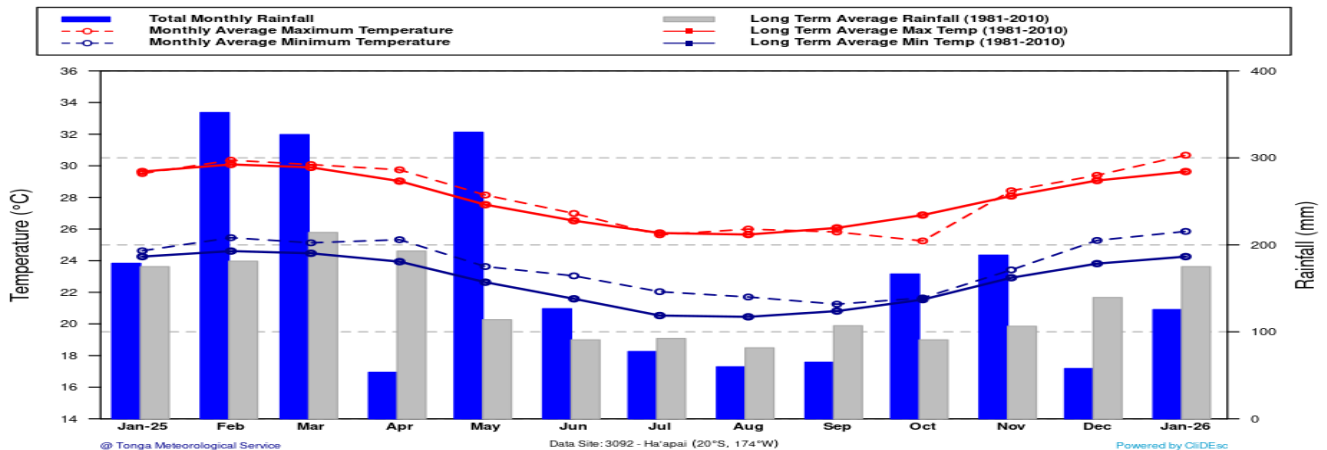
**Fua'amotu (3097) - Temperature & Rainfall for the last 13 Months**  
(January, 2025 - January, 2026)



**Lupepau'u (3091) - Temperature & Rainfall for the last 13 Months**  
(January, 2025 - January, 2026)



**Ha'apai (3092) - Temperature & Rainfall for the last 13 Months**  
(January, 2025 - January, 2026)

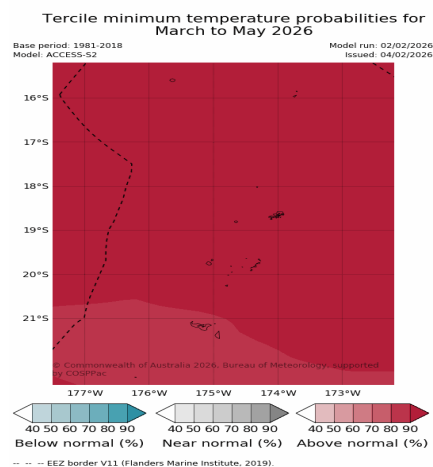
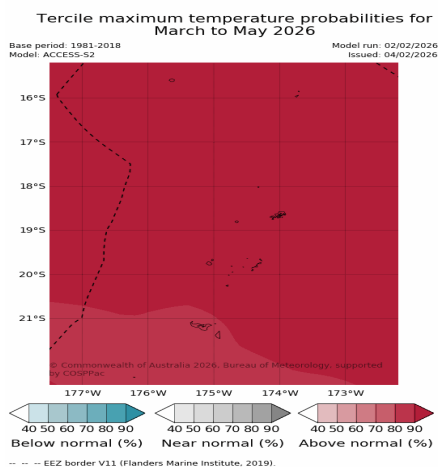
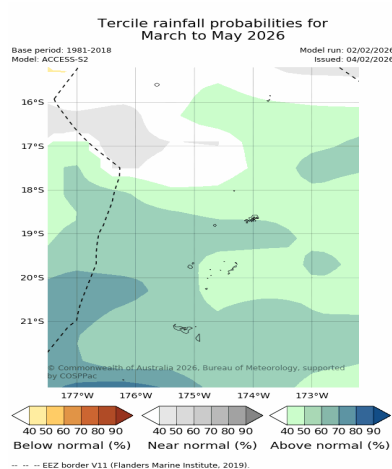


## Climate outlook for March to May 2026

- The rainfall outlook generally indicates normal to above normal for the forecast period.
- Maximum and minimum temperatures during March and averaged over March to May are very likely to be above normal over Tonga.
- El Niño-Southern Oscillation (ENSO) indicators show a weakening La Niña. However we are still in the wet season hence the forecast is for normal to above normal rainfall for Tonga.

**Table 2. Rainfall Outlook March — May 2026**

Location	Rainfall Outlook March — May 2026		% Chance (This is the % chance that this outlook will occur).
Niuafo'ou	Above normal	639 mm – 798mm	40 - 50
Niutoputapu	Above normal	550mm – 737mm	40 - 50
Vava'u	Above normal	599mm – 810mm	50 - 60
Ha'apai	Above normal	545mm – 672mm	50 - 60
Fua'amotu	Above normal	434mm – 629mm	50 - 60
Nuku'alofa	Above normal	455mm – 607mm	50 - 60
'Eua	Above normal	434mm – 629mm	50 - 60



## Traditional knowledge indicators for Tropical Cyclone forecasting.

- Fruit trees unusually bearing plenty of fruits especially mangoes and breadfruit indicates alert people of a possible cyclone to happen that year. Currently, fruits are hardly bearing fruits.
- Bees nesting lower near the ground and inside empty cococut shells to hide from cyclones. Currently, bees are seen to nest in the open, meaning no sign of cyclone yet.
- Spiders normally nest in closed areas where it is safe, as seen now spiders are making their web in the open meaning no sign yet of a coming cyclone.
- Young shoots of banana leaves bending is a sign to alert people of a possible cyclone. This sign is not seen yet.
- Frigate birds hunting inland but it is not normal for them to come inland, this is a sign that usually alert people of a possible cyclone. We have not seen flock of frigate birds inland these days.
- When flowers start to bloom especially the indigenous flowers then it is a sign that warm weather is Approaching.
- Cockroaches are seen flying in the house is a sign that rain is coming soon.

## **Tongan Calendar and traditional knowledge:**

### **Parts of Vaimui, Faka'afumo'ui, Faka'afumate, Hilinga kekekele (February to May)**

The rainy season most welcomed by farmers but latter half of the season when winds and rain are too much then it becomes problematic to farmers when strong winds and too much rain can cause damage to plantation especially yams and other root crops. Around May, yams are ready to be harvested, newly harvested yams have soil attached to the tubers

#### **Note:**

The Wet Season started on 1<sup>st</sup> November 2025 and will last till end of April 2026. It is also called the Cyclone Season. On average, during this period Tonga receive average to above average rainfall.

According to the current status, the previous 3 months rainfall and rainfall outlook (Refer Table1), it is advised to collect water when it rains and use it wisely, this goes to all of Tonga islands. The public are advised to ensure that you stay alert at all times and get the latest weather forecast and warnings from the Met service. It is also advisable to seek advice from relevant authorities of sensitive sectors, e.g. Agriculture, Water, Health and the National Disaster Risk Management Office (NDRMO) on the best practices to save lives and property and minimize the effects of natural disaster.

***The next Climate update will be issued second week of March 2026 or earlier***

#### **Disclaimer:**

This summary is prepared as soon as possible following the end of the month, once climate data is received from recording stations around Tonga. Delays in data collection, communication and processing occasionally arise. While every effort is made to verify observational data, the Tonga Meteorological Service makes no statements, representations, or warranties about the accuracy or completeness of, and you should not rely on, any information contained in this report. Despite our best efforts, TMS makes no warranties that the information in this publication is free of numerical errors. TMS disclaims all responsibility and all liability (including without limitation, liability in negligence) for all expenses, losses, damages and costs you might incur as a result of the information being inaccurate or incomplete in any way, and for any reason. This information should be used as a guidance only. For further information about this forecast should be directed to the Director of the Tonga Meteorological Service, at P.O. Box 1380, Nuku'alofa. Or email at [metstaff@met.gov.to](mailto:metstaff@met.gov.to) Tel: (676) 0800638/ 7400062 or our website: <http://www.met.gov.to> for more information.