



## Tonga Climate Update & Climate Outlook



May - July 2026

Issued: 13 April 2026

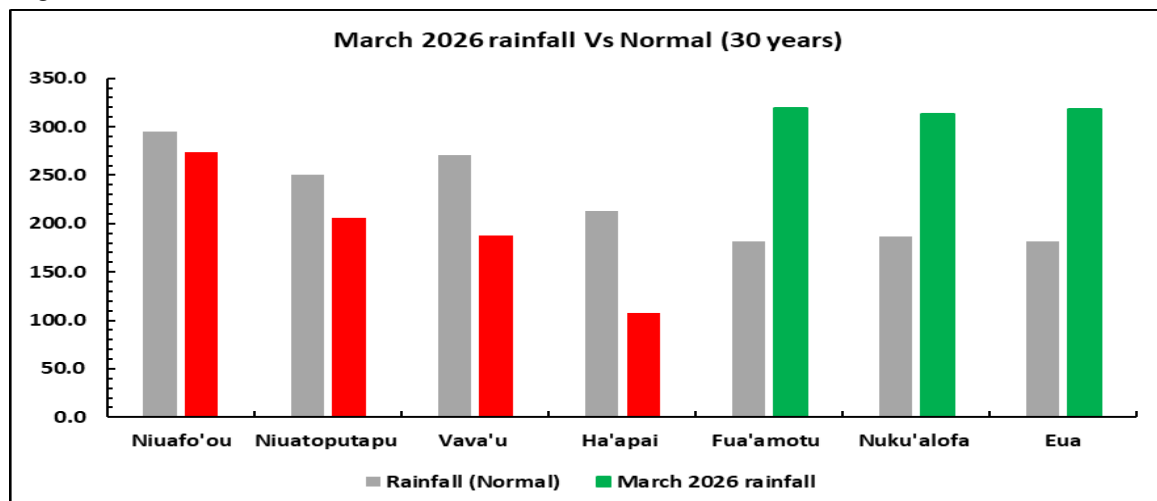
### Recent - March 2026

- **El Niño-Southern Oscillation (ENSO) indicates La Niña has ended with ENSO-neutral conditions present.**
- Above average rainfall was recorded in Tongatapu and 'Eua, while below average rainfall elsewhere. Refer to Table 1 & graph below.
- The highest 24 hour rainfall was 132.0mm recorded at Fua'amotu on the 2<sup>nd</sup>.
- The mean air temperature was 27.6°C which was 0.5°C warmer than average.
- Highest maximum temperature was 34.5°C recorded at Mo'unga 'Olive on the 19<sup>th</sup>.
- Lowest minimum temperature was 18.3°C recorded in 'Atele on the 31<sup>st</sup>.
- Daytime maximum has been warmer than long term average and also warmer than March 2025.

Table 1.

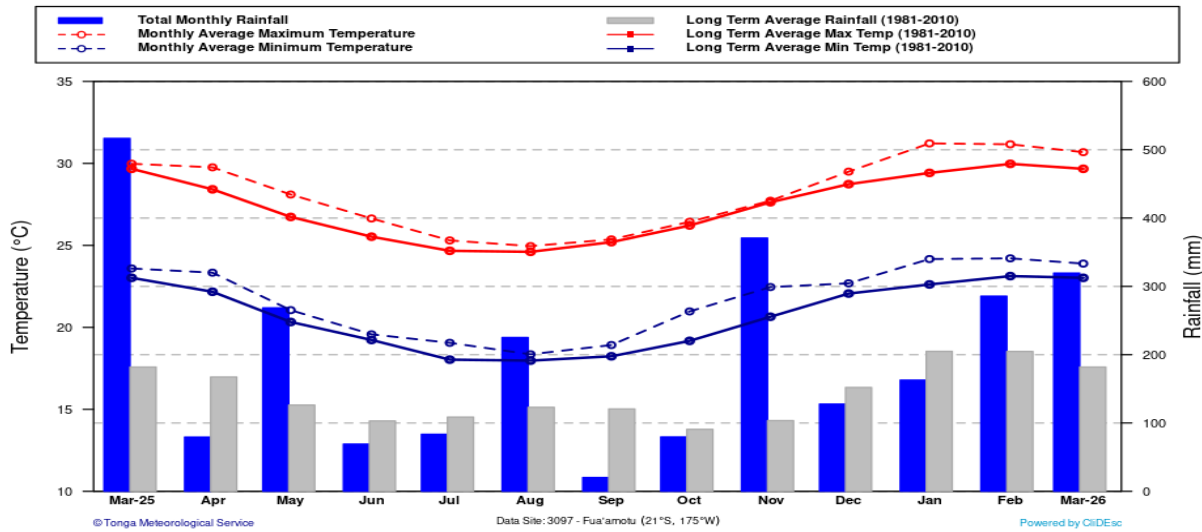
Rainfall totals (mm) for the last six months, October 2025 to March 2026						
	October	November	December	January	February	March
Niuafo'ou	69.5	374.0	155.5	192.5	253.0	274
Niuaotoputapu	56.5	466.2	189.0	118.8	263.5	206
Vava'u	81.1	342.3	451.5	158.9	328.4	188
Ha'apai	166.5	181.8	57.8	125.6	257.9	108
Fua'amotu	79.7	370.4	127.8	162.9	285.7	319.5
Nuku'alofa	151.0	334.0	115.0	86.5	154.0	313.5
'Eua	171.0	277.1	214.3	205.0	238.0	318.0
Below normal		Normal (usual)			Above normal	

Figure 1.

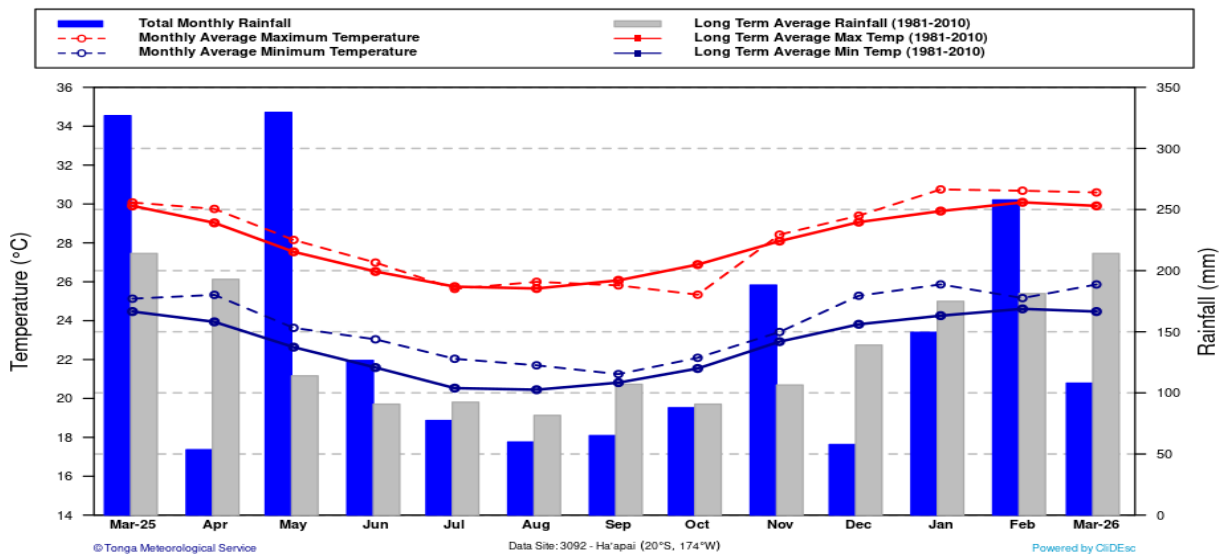


# Temperatures & Rainfall for the main islands for the last 13 months

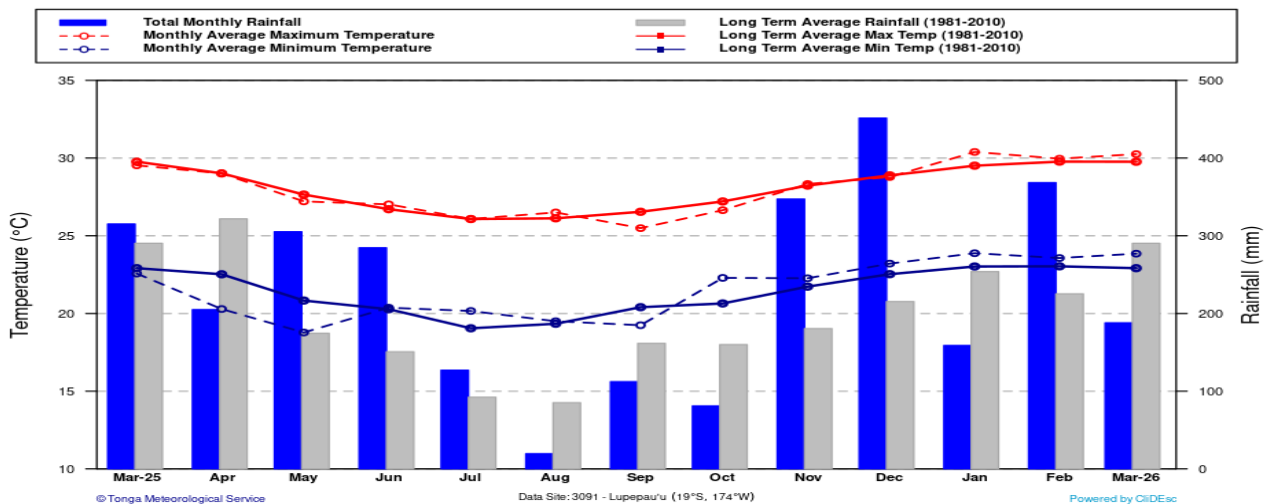
**Fua'amotu (3097) - Temperature & Rainfall for the last 13 Months  
(March, 2025 - March, 2026)**



**Ha'apai (3092) - Temperature & Rainfall for the last 13 Months  
(March, 2025 - March, 2026)**



**Lupepau'u (3091) - Temperature & Rainfall for the last 13 Months  
(March, 2025 - March, 2026)**

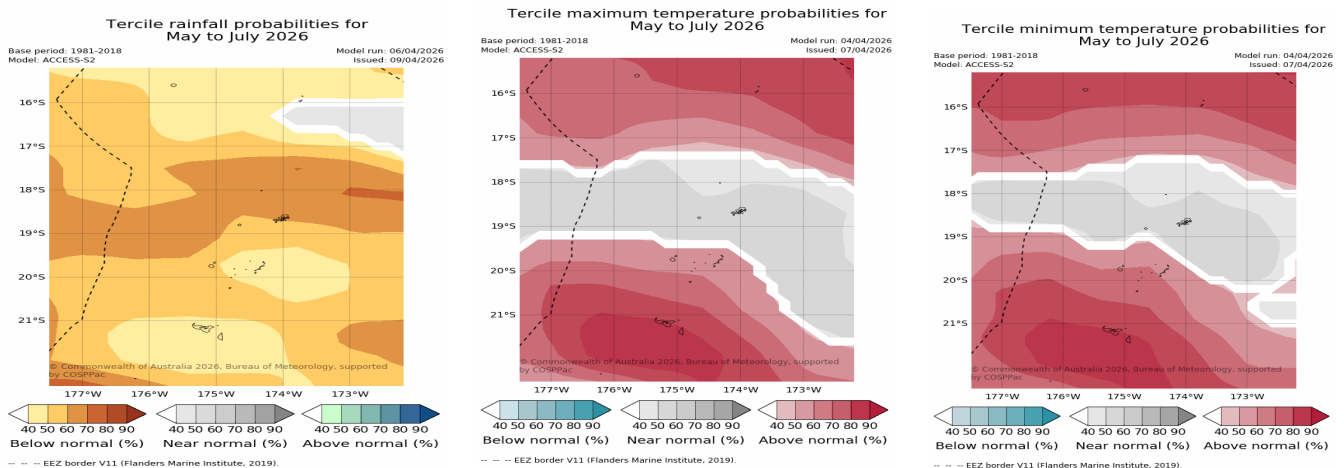


## Climate outlook for May to July 2026

- A transition to **El Niño** is highly likely, with over a 60% chance of its development between May and July 2026. Majority of the climate models, forecast the tropical Pacific to continue warming in the coming months. **Neutral ENSO** conditions are expected to persist until at least late autumn (June), with all models indicating warming to levels consistent with El Niño by the end of winter (June-August). There is some variation across models in the rate at which El Niño thresholds may be reached. Ocean-atmosphere coupling (where the ocean and atmosphere act to reinforce each other) is required for a sustained El Niño state.
- The rainfall outlook generally indicates below normal for the forecast period. This is consistent with the current ENSO outlook.
- Both maximum and minimum temperatures are very likely to be near normal about Vava'u and above normal over the rest of Tonga.

**Table 2. Rainfall Outlook May — July 2026**

Location	Rainfall Outlook May — July 2026		% Chance (This is the % chance that this outlook will occur).
<b>Niuafo'ou</b>	Below normal	362 mm – 483mm	40 - 50
<b>Niuatoputapu</b>	Below normal	321mm – 434mm	40 - 50
<b>Vava'u</b>	Below normal	306mm – 414mm	60 - 70
<b>Ha'apai</b>	Below normal	217mm – 325mm	50 - 60
<b>Fua'amotu</b>	Below normal	268mm – 439mm	40 - 50
<b>Nuku'alofa</b>	Below normal	294mm – 439mm	40 - 50
<b>'Eua</b>	Below normal	245mm – 343mm	40 - 50



### Traditional knowledge indicators for Tropical Cyclone forecasting.

- Fruit trees unusually bearing plenty of fruits especially mangoes and breadfruit indicates alert people of a possible cyclone to happen that year. Currently, fruits are hardly bearing fruits.
- Bees nesting lower near the ground and inside empty cococut shells to hide from cyclones. Currently, bees are seen to nest in the open, meaning no sign of cyclone yet.
- Spiders normally nest in closed areas where it is safe, as seen now spiders are making their web in the open meaning no sign yet of a coming cyclone.
- Young shoots of banana leaves bending is a sign to alert people of a possible cyclone. This sign is not seen yet.
- Frigate birds hunting inland but it is not normal for them to come inland, this is a sign that usually alert people of a possible cyclone. We have not seen flock of frigate birds inland these days.
- When flowers start to bloom especially the indigenous flowers then it is a sign that warm weather is Approaching.
- Cockroaches are seen flying in the house is a sign that rain is coming soon.

## **Tongan Calendar and traditional knowledge:**

### **Parts of Hilinga kelekele, Hilingamea'a, 'Ao'ao (Parts of May to July)**

Around May, yams are ready to be harvested, and by June the farmer is proud to be feeding from his yam store and in July, no cutting of the yam tubes.

#### **Note:**

The Wet Season started on 1<sup>st</sup> November 2025 and will last till end of April 2026. It is also called the Cyclone Season. On average, during this period Tonga receive average to above average rainfall.

**According to the current status, the previous 3 months rainfall and rainfall outlook (Refer Table1 & 2), it is advised to collect water when it rains and use it wisely, this goes to all of Tonga islands but especially to Ha'apai, Vava'u and the Niua.** The public are advised to ensure that you stay alert at all times and get the latest weather forecast and warnings from the Met service. It is also advisable to seek advice from relevant authorities of sensitive sectors, e.g. Agriculture, Water, Health and the National Disaster Risk Management Office (NDRMO) on the best practices to save lives and property and minimize the effects of natural disaster.

***The next Climate update will be issued second week of May 2026 or earlier***

#### **Disclaimer:**

This summary is prepared as soon as possible following the end of the month, once climate data is received from recording stations around Tonga. Delays in data collection, communication and processing occasionally arise. While every effort is made to verify observational data, the Tonga Meteorological Service makes no statements, representations, or warranties about the accuracy or completeness of, and you should not rely on, any information contained in this report. Despite our best efforts, TMS makes no warranties that the information in this publication is free of numerical errors. TMS disclaims all responsibility and all liability (including without limitation, liability in negligence) for all expenses, losses, damages and costs you might incur as a result of the information being inaccurate or incomplete in any way, and for any reason. This information should be used as a guidance only. For further information about this forecast should be directed to the Director of the Tonga Meteorological Service, at P.O. Box 1380, Nuku'alofa. Or email at [metstaff@met.gov.to](mailto:metstaff@met.gov.to) Tel: (676) 0800638/ 7400062 or our website; <http://www.met.gov.to> for more information.