



Tonga Climate Update & Climate Outlook



June - August 2026

Issued: 5 May 2026

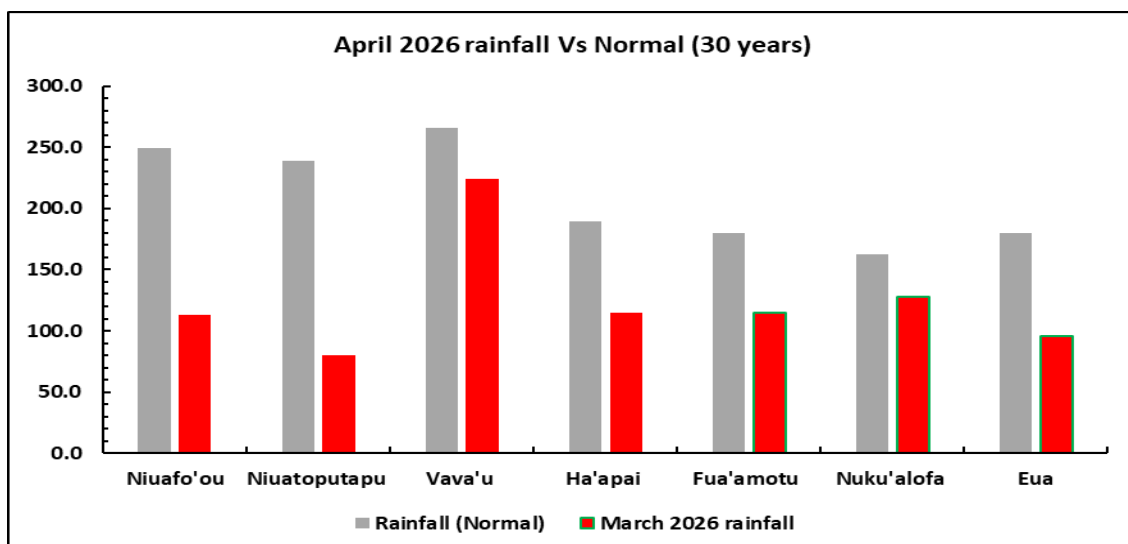
Recent - April 2026

- Below average rainfall was recorded across the country in April. Refer to Table 1 & graph below.
- The highest 24 hour rainfall was 118.0mm recorded at Lapaha on the 21st.
- The mean air temperature was 26.9^oC which was 0.4^oC warmer than average.
- Highest maximum temperature was 33.5^oC recorded at Mo'unga 'Olive on the 8th.
- Lowest minimum temperature was 18.3^oC recorded in 'Atele on the 19th.

Table 1.

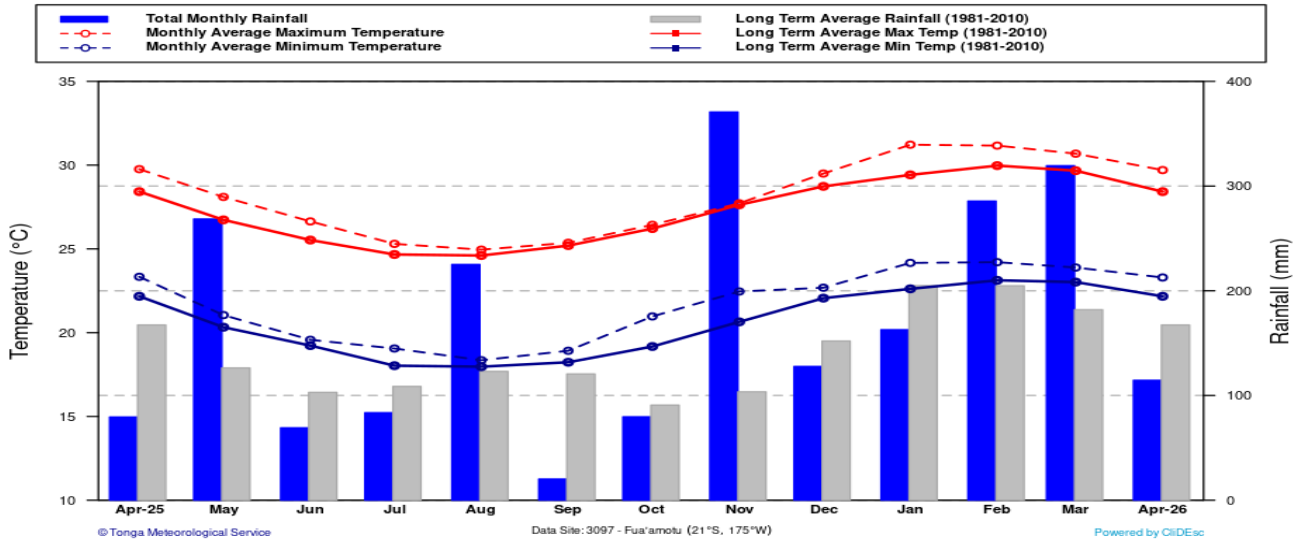
Rainfall totals (mm) for the last six months, November 2025 to April 2026						
	November	December	January	February	March	April
Niufo'ou	374.0	155.5	192.5	253.0	274.0	113.5
Niuatoputapu	466.2	189.0	118.8	263.5	206.0	80.0
Vava'u	342.3	451.5	158.9	328.4	188.0	224.6
Ha'apai	188.2	57.8	149.6	257.9	113.0	111.4
Fua'amotu	370.4	127.8	162.9	285.7	319.5	114.6
Nuku'alofa	334.0	115.0	86.5	154.0	313.5	127.5
'Eua	277.1	214.3	205.0	238.0	318.0	95.5
Below normal		Normal (usual)			Above normal	

Figure 1.

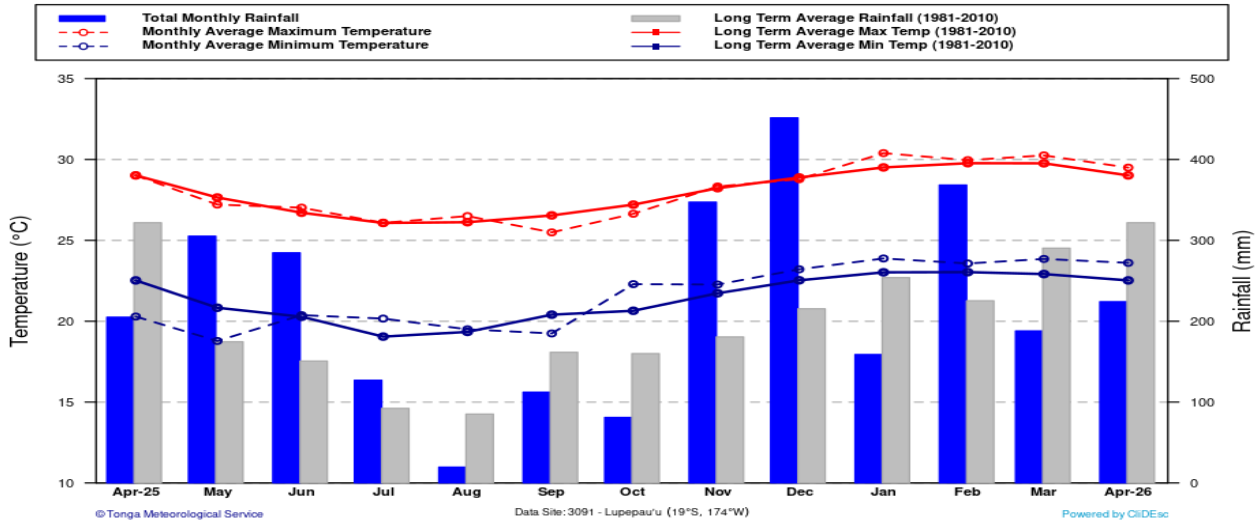


Temperatures & Rainfall for the main islands for the last 13 months

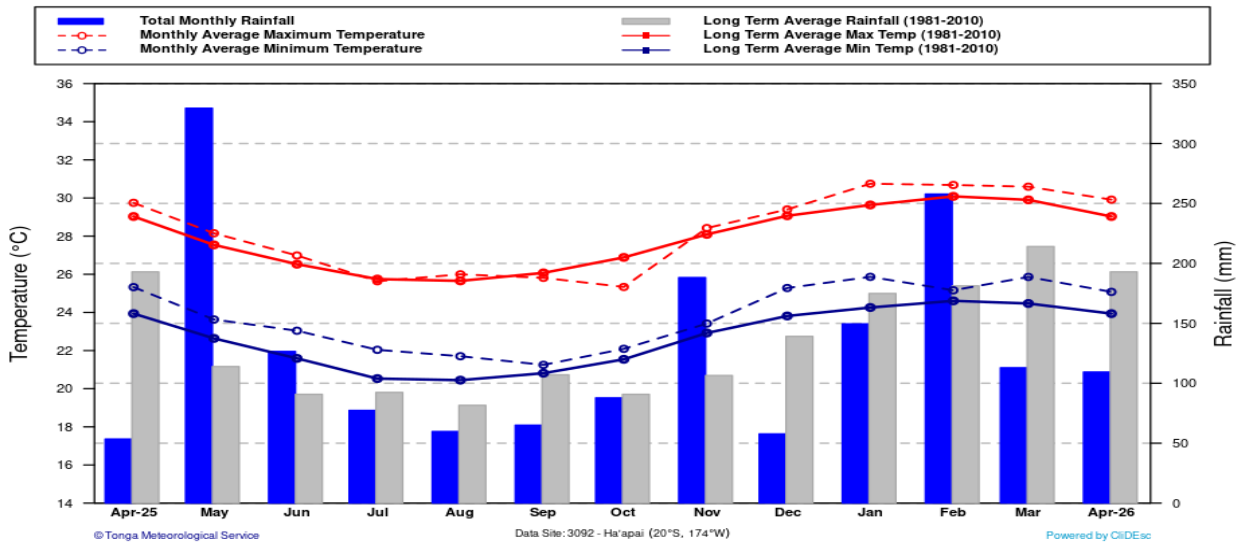
Fua'amotu (3097) - Temperature & Rainfall for the last 13 Months
(April, 2025 - April, 2026)



Lupepau'u (3091) - Temperature & Rainfall for the last 13 Months
(April, 2025 - April, 2026)



Ha'apai (3092) - Temperature & Rainfall for the last 13 Months
(April, 2025 - April, 2026)

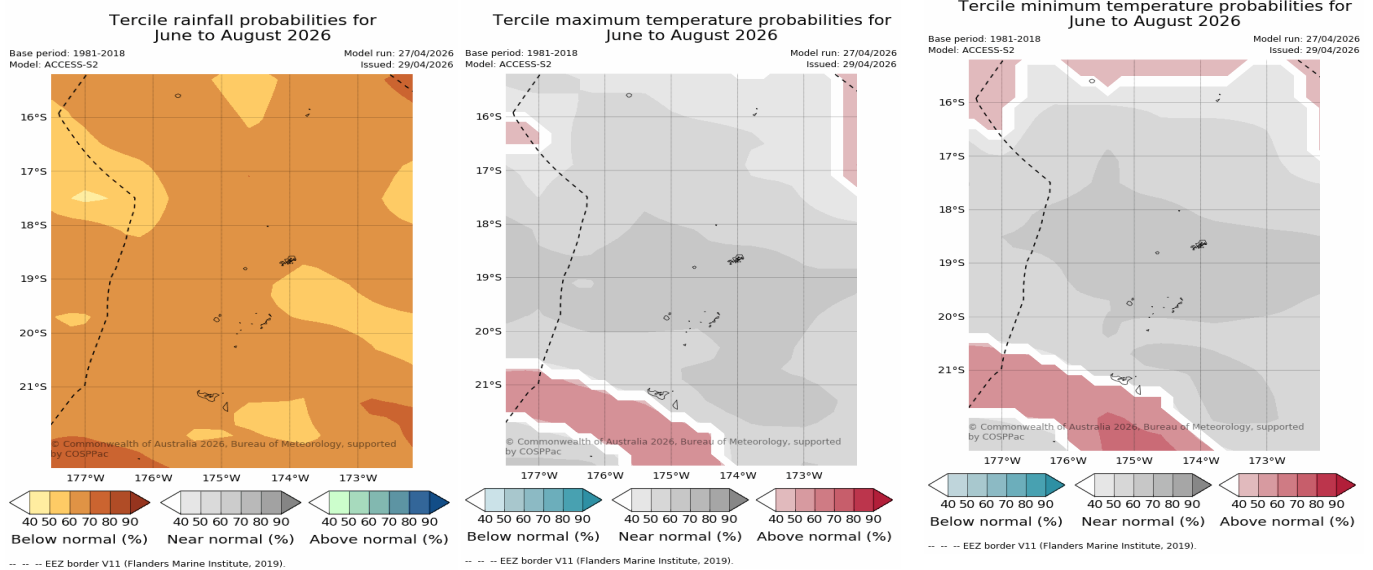


Climate outlook for June to August 2026

- The rainfall outlook generally indicates below average across Tonga.
- Warmer than average daytime maximum and night time minimum temperatures across the country.
- El Nino Southern Oscillation (ENSO) is currently neutral. A possible shift to [El Niño](#) is highly likely later in the forecast period.

Table 2. Rainfall Outlook June — August 2026

Location	Rainfall Outlook June — August 2026		% Chance (This is the % chance that this outlook will occur).
Niuafo'ou	Below normal	274 mm – 419mm	60 - 70
Niutoputapu	Below normal	240mm – 360mm	60 - 70
Vava'u	Below normal	251mm – 355mm	60 - 70
Ha'apai	Below normal	195mm – 314mm	60 - 70
Fua'amotu	Below normal	270mm – 397mm	60 - 70
Nuku'alofa	Below normal	236mm – 369mm	60 - 70
'Eua	Below normal	270mm – 397mm	60 - 70



Traditional knowledge indicators for the winter season.

- Shorter days and cooler temperatures act as a signal to the trees and plants around us to get ready for winter.
- When leaves of trees falls it indicates that winter is coming. Leaves fall off trees so that the trees can survive the winter.
- Rooster crows at night before 12 midnight is an indication that it will be a very cold night.
- When millipedes are observed inside the house, expect cooler temperatures.

Tongan Calendar and traditional knowledge:

Parts of Faka'afumate, Hilinga kelekele, Hilingamea'a, 'Ao'ao (Parts of June to August)

Yams are ready to be harvested, and by June the farmer is proud to be feeding from his yam store and in July, no cutting of the yam tubes.

Important Note:

- It is the dry season which started on 1st May to end of October 2026. On average, during this period, Tonga receive less rainfall than during the wet season.
- Expect some chill and cool nights as we transition into the cool dry season.
- Collect water when it rains and use it wisely.
- Public are advised to ensure that you stay alert at all times
- Get the latest climate & weather forecast and warnings from the Met service.
- It is also advisable to seek advice from relevant authorities of sensitive sectors, e.g. Agriculture, Water, Health and the National Disaster Risk Management Office (NDRMO) on the best practices to save lives and property and minimize the effects of natural disaster.

The next Climate update will be issued second week of June 2026 or earlier

Disclaimer:

This summary is prepared as soon as possible following the end of the month, once climate data is received from recording stations around Tonga. Delays in data collection, communication and processing occasionally arise. While every effort is made to verify observational data, the Tonga Meteorological Service makes no statements, representations, or warranties about the accuracy or completeness of, and you should not rely on, any information contained in this report. Despite our best efforts, TMS makes no warranties that the information in this publication is free of numerical errors. TMS disclaims all responsibility and all liability (including without limitation, liability in negligence) for all expenses, losses, damages and costs you might incur as a result of the information being inaccurate or incomplete in any way, and for any reason. This information should be used as a guidance only. For further information about this forecast should be directed to the Director of the Tonga Meteorological Service, at P.O. Box 1380, Nuku'alofa. Or email at metstaff@met.gov.to. Tel: (676) 0800638/ 7400062 or our website: <http://www.met.gov.to> for more information.