



# Tonga Climate Update & Climate Outlook



June - October 2026

Issued: 10 June 2026

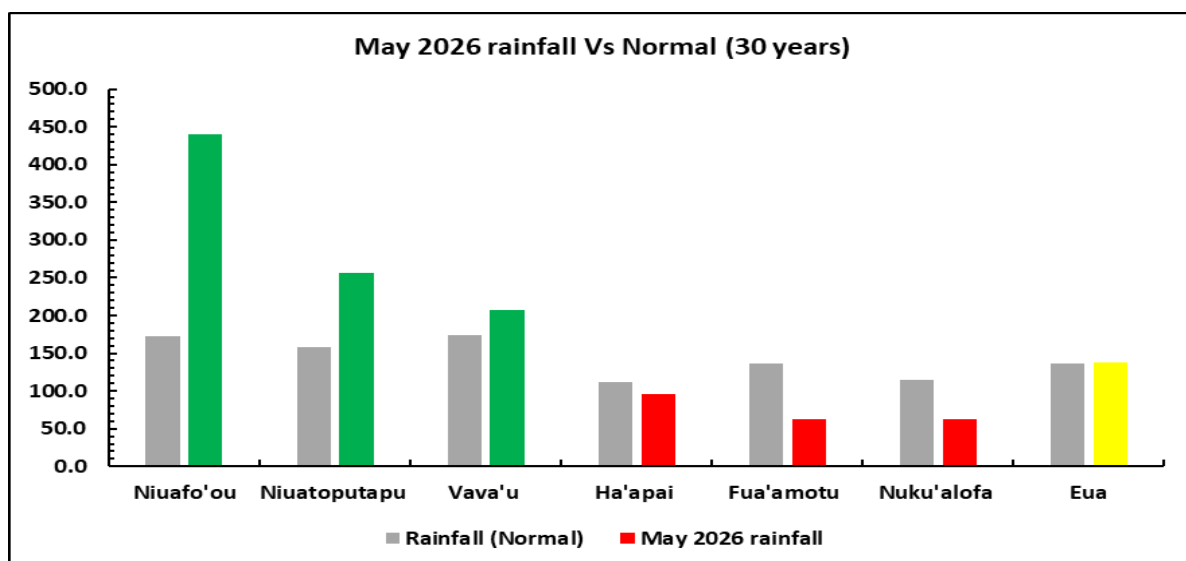
## Recent - May 2026

- ENSO neutral conditions remain in place in the tropical Pacific but El Nino is expected to form in the coming season.
- Above average rainfall recorded in Vava'u and the Niuaus, below average rainfall was recorded in Ha'apai & Tongatapu. Refer to Table 1 & graph below.
- The highest 24 hour rainfall was 145.0mm recorded in Niufo'ou on the 4<sup>th</sup>.
- The mean air temperature was 24.5<sup>o</sup>C which was 0.7<sup>o</sup>C cooler than average.
- Highest maximum temperature was 32.3<sup>o</sup>C recorded at Niufo'ou on the 3<sup>rd</sup>.
- Lowest minimum temperature was 13.1<sup>o</sup>C recorded in 'Atele on the 22<sup>nd</sup>.

Table 1.

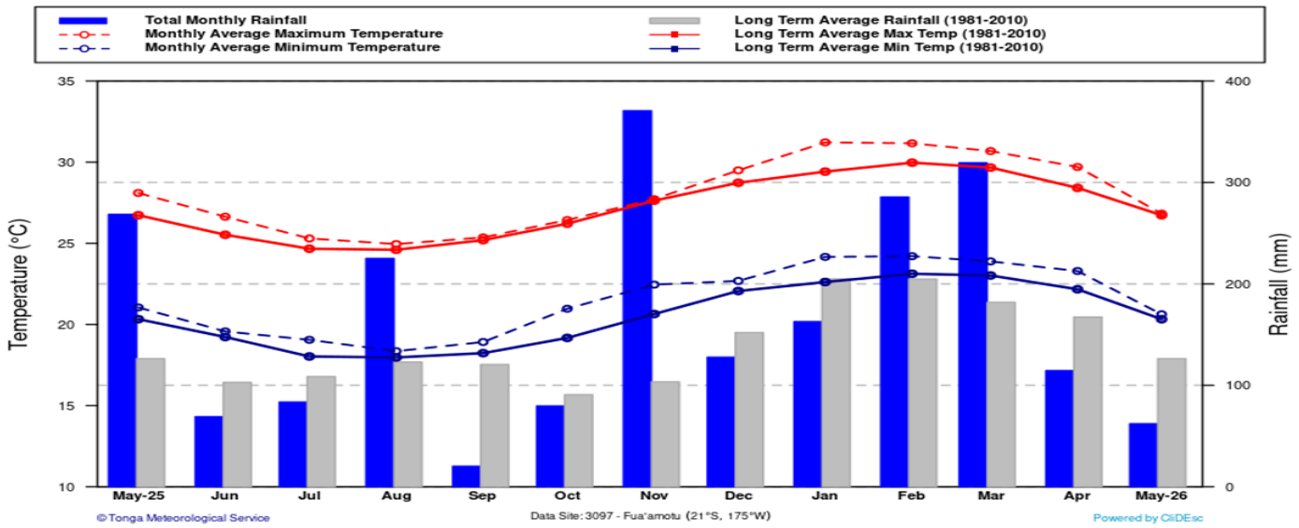
Rainfall totals (mm) for the last six months December 2025 to May 2026						
	December	January	February	March	April	May
Niufo'ou	155.5	192.5	253.0	274.0	113.5	440.0
Niuatoputapu	189.0	118.8	263.5	206.0	80.0	255.9
Vava'u	451.5	158.9	328.4	188.0	224.6	207.2
Ha'apai	57.8	149.6	257.9	113.0	111.4	96.1
Fua'amotu	127.8	162.9	285.7	319.5	114.6	62.2
Nuku'alofa	115.0	86.5	154.0	313.5	127.5	62.5
'Eua	214.3	205.0	238.0	318.0	95.5	137.5
Below normal		Normal (usual)			Above normal	

Figure 1.

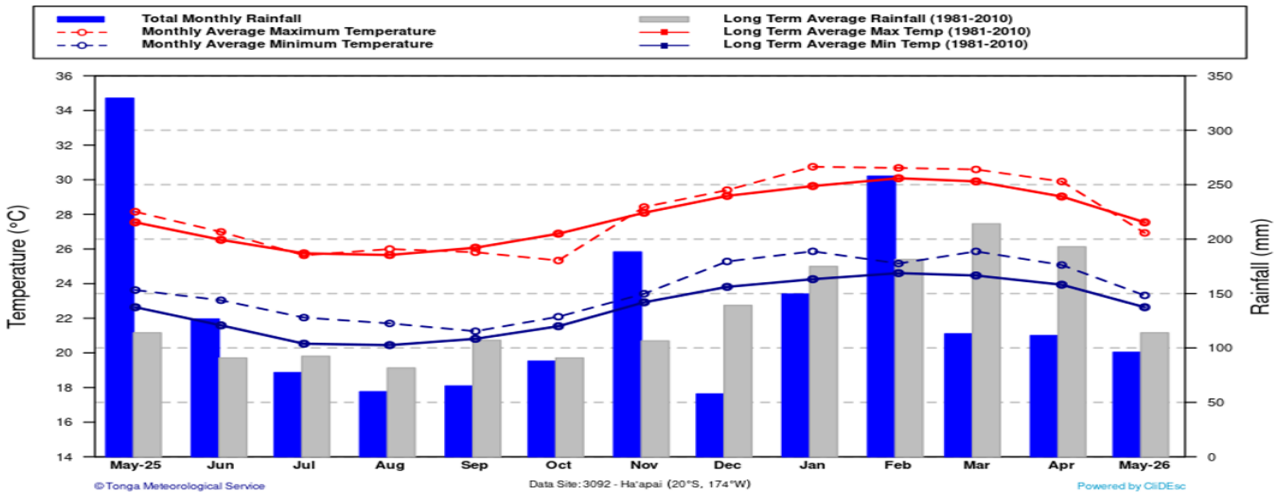


# Temperatures & Rainfall for the main islands for the last 13 months

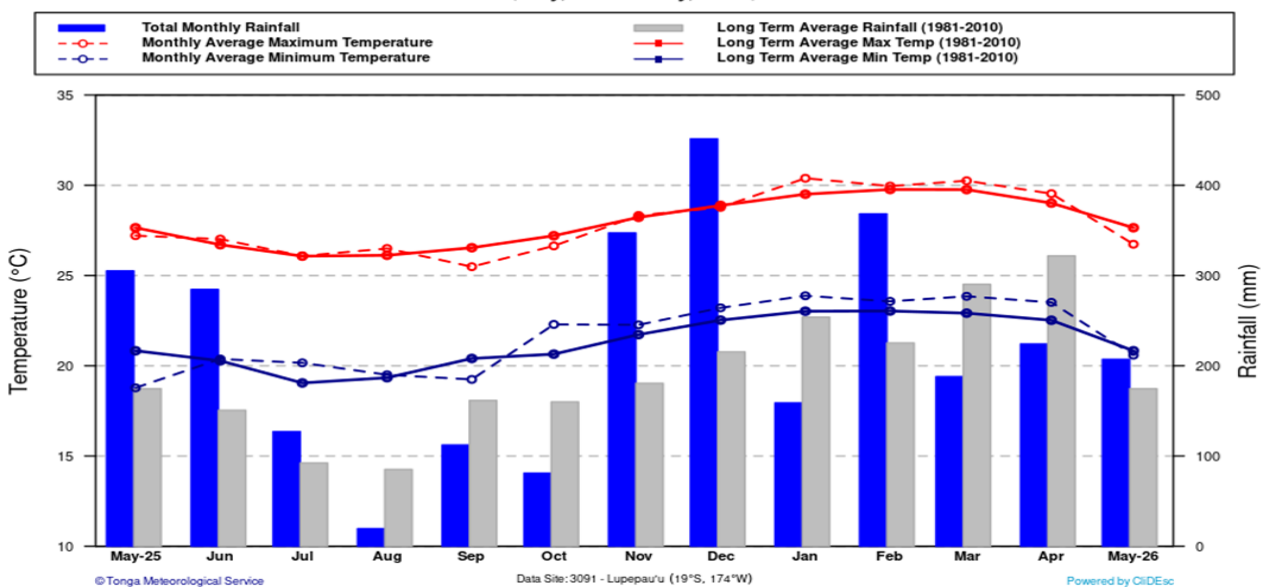
**Fua'amotu (3097) - Temperature & Rainfall for the last 13 Months**  
(May, 2025 - May, 2026)



**Ha'apai (3092) - Temperature & Rainfall for the last 13 Months**  
(May, 2025 - May, 2026)



**Lupepau'u (3091) - Temperature & Rainfall for the last 13 Months**  
(May, 2025 - May, 2026)

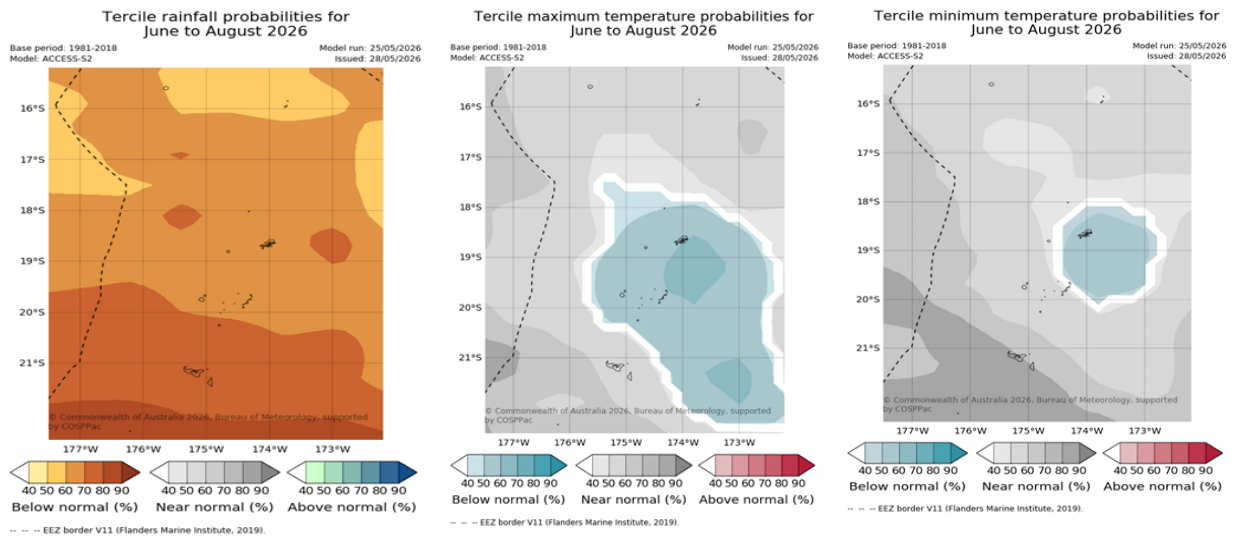


## Climate outlook for June to August 2026

- There is 80% chance that El Niño conditions will develop during the forecast period.
- The rainfall outlook generally indicates below average across Tonga.
- Cooler than average daytime maximum and night time minimum temperatures across the country.

**Table 2. Rainfall Outlook June — August 2026**

Location	Rainfall Outlook June — August 2026		% Chance (This is the % chance that this outlook will occur).
<b>Niuafo’ou</b>	Below normal	247 mm – 421mm	60 - 80
<b>Niutoputapu</b>	Below normal	215mm – 374mm	60 - 80
<b>Vava’u</b>	Below normal	259mm – 402mm	60 - 80
<b>Ha’apai</b>	Below normal	217mm – 350mm	60 - 80
<b>Fua’amotu</b>	Below normal	262mm – 414mm	60 - 80
<b>Nuku’alofa</b>	Below normal	272mm – 376mm	60 - 80
<b>‘Eua</b>	Below normal	270mm – 397mm	60 - 80



### Traditional knowledge indicators for the winter season.

- Shorter days and cooler temperatures act as a signal to the trees and plants around us to get ready for winter.
- When leaves of trees falls it indicates that winter is coming. Leaves fall off trees so that the trees can survive the winter.
- Rooster crows at night before 12 midnight is an indication that it will be a very cold night.
- When millipedes are observed inside the house, expect cooler temperatures.

## **Tongan Calendar and traditional knowledge (Yam):**

### **Parts of Hilinga kekelele, Hilingamea'a, 'Ao'ao, Fufunekinaga (Parts of June to August)**

Yams harvest season has started and farmers are proud to be feeding from his yam store and in July, no cutting of the yam tubes.

#### **Important Note:**

- It is the dry season which started on 1<sup>st</sup> May to end of October 2026. On average, during this period, Tonga receive less rainfall than during the wet season.
- Expect cool nights as we transition into the cool dry season.
- Collect water when it rains and use it wisely.
- Public are advised to ensure that you stay alert at all times
- Get the latest climate & weather forecast and warnings from the Met service.
- It is also advisable to seek advice from relevant authorities of sensitive sectors, e.g. Agriculture, Water, Health and the National Disaster Risk Management Office (NDRMO) on the best practices to save lives and property and minimize the effects of natural disaster.

***The next Climate update will be issued second week of July 2026 or earlier***

#### **Disclaimer:**

This summary is prepared as soon as possible following the end of the month, once climate data is received from recording stations around Tonga. Delays in data collection, communication and processing occasionally arise. While every effort is made to verify observational data, the Tonga Meteorological Service makes no statements, representations, or warranties about the accuracy or completeness of, and you should not rely on, any information contained in this report. Despite our best efforts, TMS makes no warranties that the information in this publication is free of numerical errors. TMS disclaims all responsibility and all liability (including without limitation, liability in negligence) for all expenses, losses, damages and costs you might incur as a result of the information being inaccurate or incomplete in any way, and for any reason. This information should be used as a guidance only. For further information about this forecast should be directed to the Director of the Tonga Meteorological Service, at P.O. Box 1380, Nuku'alofa. Or email at [metstaff@met.gov.to](mailto:metstaff@met.gov.to). Tel: (676) 0800638/ 7400062 or our website: <http://www.met.gov.to> for more information.