



Tonga Climate Update & Climate Outlook



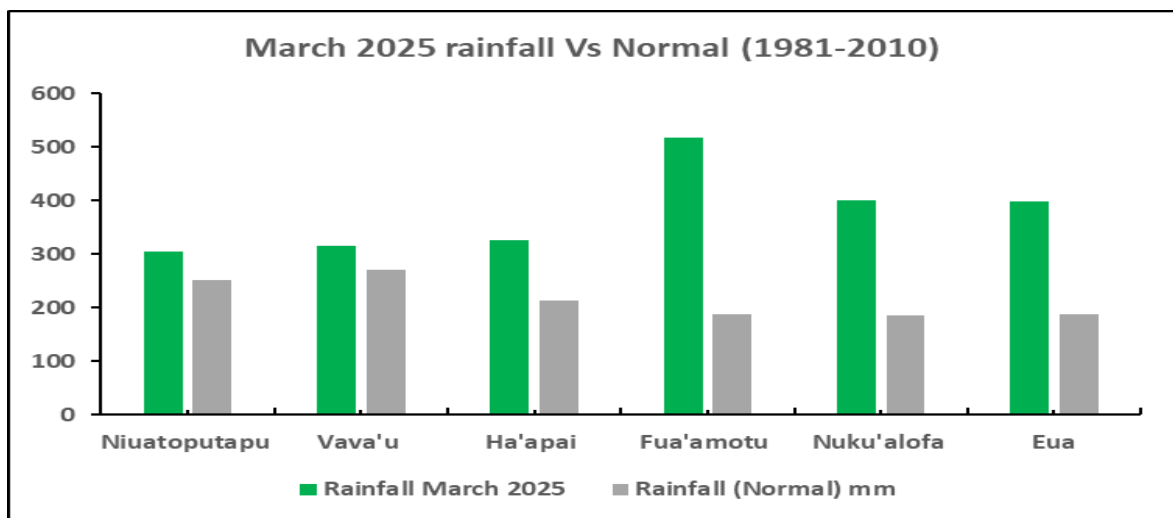
May - July 2025

Issued: 28 April 2025

Recent - March 2025

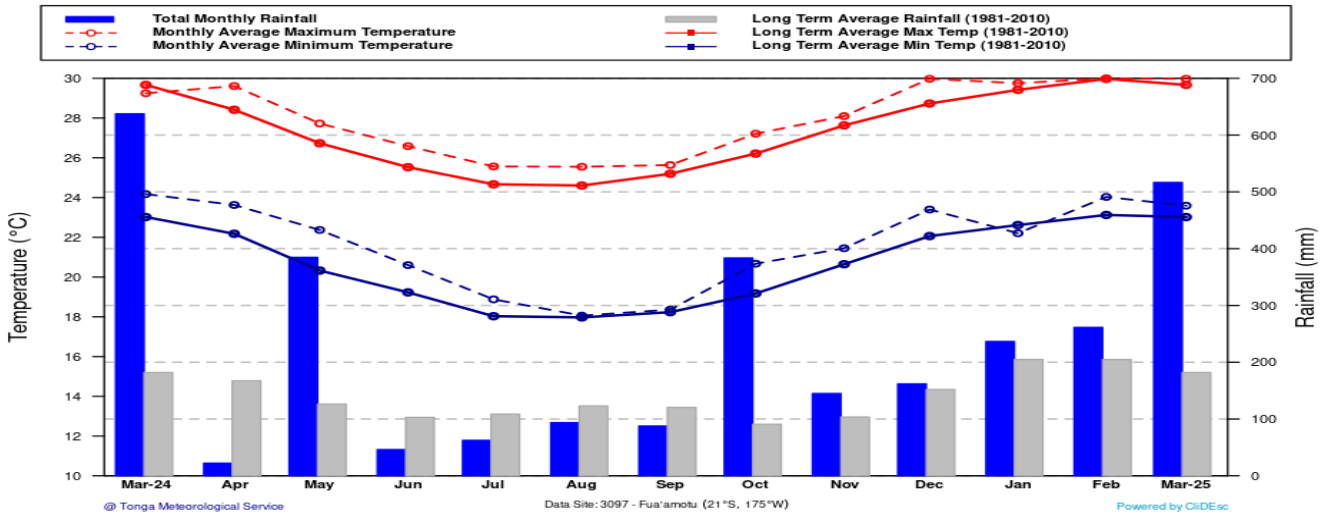
- Extremely high rainfall received across the country during March. The highest 24 hour rainfall was 197.0 mm recorded in Kolovai on the 3rd.
- The mean air temperature was 27.0°C which was 0.1°C cooler than normal.
- Highest maximum temperature was 32.8°C recorded at Nuku'alofa on the 18th.
- Lowest temperature was 18.5°C recorded at Vava'u on the 27th.

Rainfall totals (mm) for the last six months, October 2024 to March 2025						
	Oct	Nov	Dec	Jan	Feb	Mar
Niufo'ou	n/a	n/a	n/a	n/a	n/a	n/a
Niuatoputapu	128.5	156.0	141.1	623.9	374.4	305.0
Vava'u	60.9	155.6	272.2	249.6	161.0	315.2
Ha'apai	87.3	84.7	135.0	178.8	343.3	326.8
Fua'amotu	383.7	145.0	162.0	236.7	261.5	516.7
Nuku'alofa	387.0	126.0	107.5	121.0	470.0	400.5
'Eua	587.6	147.7	131.5	284.0	413.2	398.8
	Below normal	Normal (usual)	Above normal			

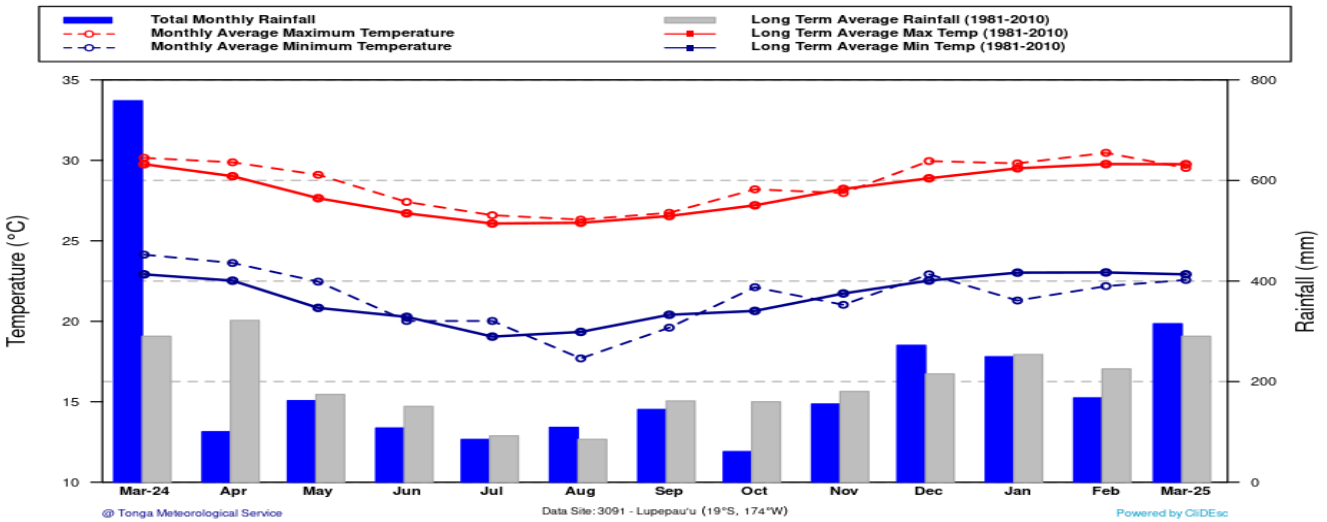


Long-Term Climate for the main islands for the last 13 months

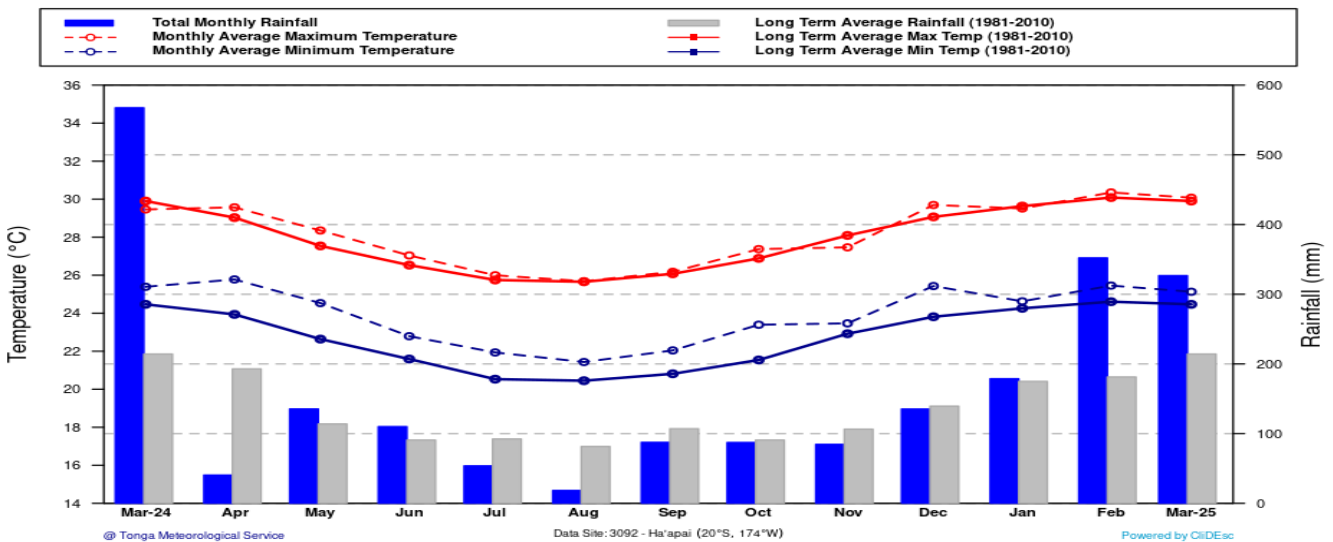
Fua'amotu (3097) - Temperature & Rainfall for the last 13 Months
(March, 2024 - March, 2025)



Lupepau'u (3091) - Temperature & Rainfall for the last 13 Months
(March, 2024 - March, 2025)



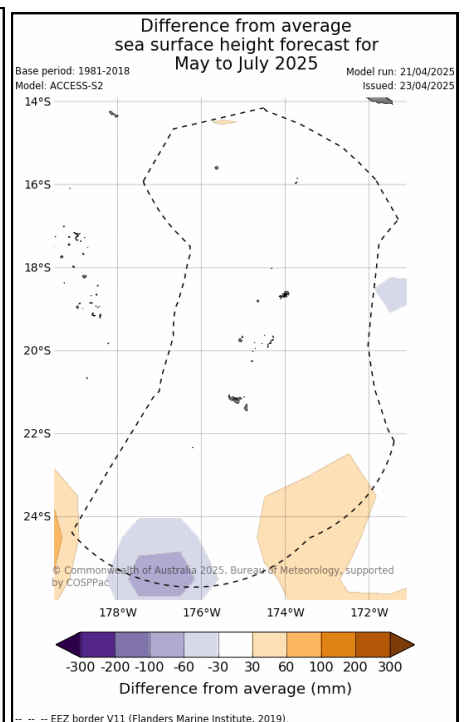
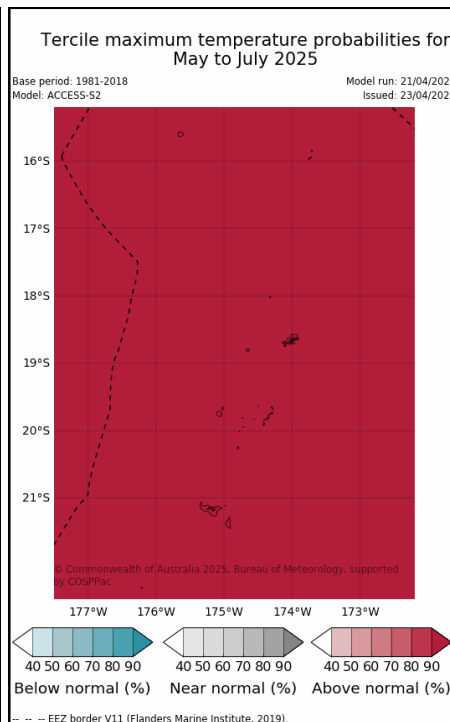
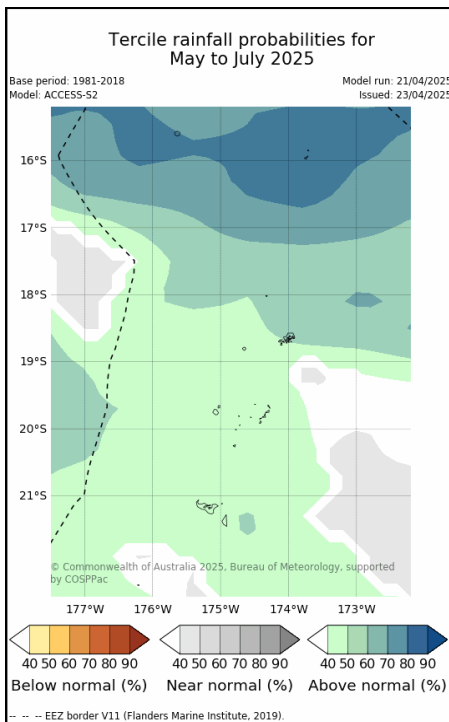
Ha'apai (3092) - Temperature & Rainfall for the last 13 Months
(March, 2024 - March, 2025)



Climate outlook for May to July 2025

- Average to below average rainfall .
- Warmer than average maximum air temperature.
- Average to above average sea surface temperature
- Sea level forecast shows average heights across Tonga waters.

Location	Rainfall Outlook May—July 2025		% Chance (This is the % chance that this outlook will occur).
	Outlook	Rainfall Range (mm)	
Niufo'ou	Normal	363mm – 483mm	40 - 50
Niuatoputapu	Normal	321mm – 423mm	40 - 50
Vava'u	Normal	305mm – 409mm	40 - 50
Ha'apai	Normal	213mm – 321mm	40 - 50
Fua'amotu	Normal	264mm – 441mm	40 - 50
Nuku'alofa	Normal	244mm – 347mm	40 - 50
'Eua	Normal	264mm – 441mm	40 - 50



The next Climate update will be issued second week of May 2025 or earlier

Disclaimer:

This summary is prepared as soon as possible following the end of the month, once climate data is received from recording stations around Tonga. Delays in data collection, communication and processing occasionally arise. While every effort is made to verify observational data, the Tonga Meteorological Service makes no statements, representations, or warranties about the accuracy or completeness of, and you should not rely on, any information contained in this report. Despite our best efforts, TMS makes no warranties that the information in this publication is free of numerical errors. TMS disclaims all responsibility and all liability (including without limitation, liability in negligence) for all expenses, losses, damages and costs you might incur as a result of the information being inaccurate or incomplete in any way, and for any reason. This information should be used as a guidance only. For further information about this forecast should be directed to the Director of the Tonga Meteorological Service, at P.O. Box 1380, Nuku'alofa. Or email at metstaff@met.gov.to Tel: (676) 0800638/ 7400062 or our website: <http://www.met.gov.to> for more information.