



Tonga Climate Update & Climate Outlook



September - November 2025

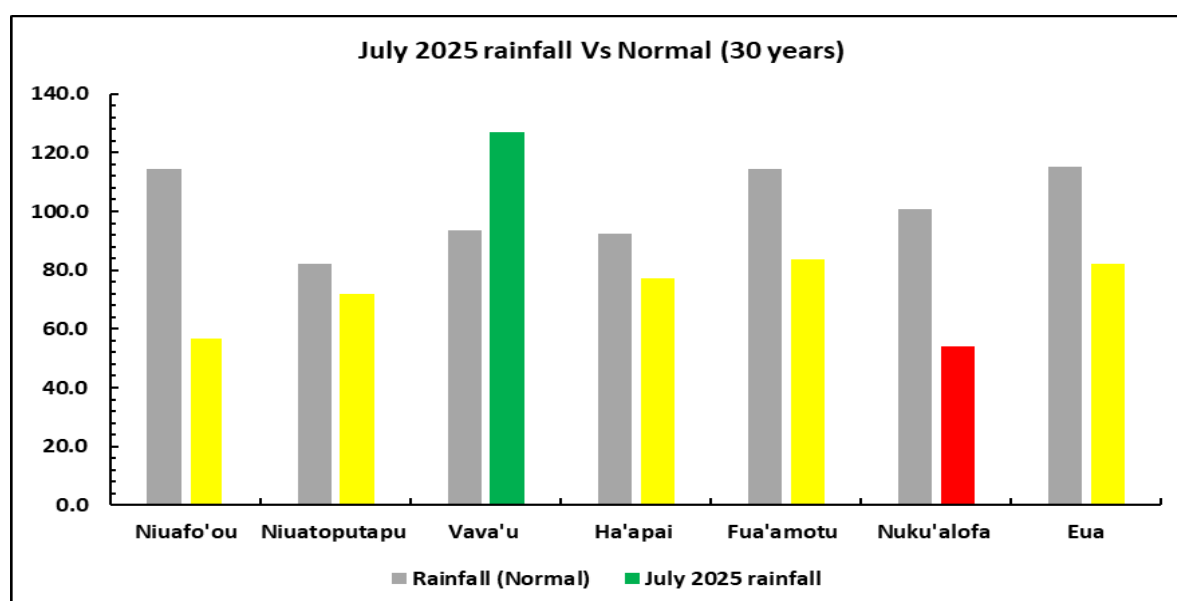
Issued: 14 August 2025

Recent - July 2025

- Mostly average rainfall received across the country except Nuku'alofa where below average rainfall was received, refer to Table 1 & graph below.
- Vava'u received the highest monthly rainfall but the highest daily rainfall was 61.4mm recorded in Ha'apai on the 30th.
- The mean air temperature was 22.7°C which was 0.8°C cooler than average.
- Highest maximum temperature was 30.2°C recorded at Nuiatoputapu on the 22nd.
- Lowest minimum temperature was 12.1°C recorded at Hango, 'Eua on the 11th. The lowest July minimum temperature still remain on record at 9.3°C recorded on the 30th of July 2023 in Lapaha.
- The El Niño–Southern Oscillation (ENSO) is neutral.

Table 1.

Rainfall totals (mm) for the last six months, February to July 2025						
	February	March	April	May	June	July
Niuafo'ou	n/a	n/a	n/a	n/a	n/a	57.0
Nuiatoputapu	374.4	305.0	71.6	350.9	141.6	72.0
Vava'u	161.0	315.2	205.0	305.2	284.6	127.1
Ha'apai	343.3	326.8	53.5	329.5	126.6	77.4
Fua'amotu	261.5	516.7	79.5	268.6	69.2	83.6
Nuku'alofa	470.0	400.5	61.0	187.0	57.0	54.0
'Eua	413.2	398.8	186.1	251.0	120.7	82.1
Below normal		Normal (usual)			Above normal	



Temperatures & Rainfall for the main islands for the last 13 months

- Rainfall was well above normal for the last 5 months (except for April for most of the main islands)
- Months leading up to February, rainfall was near normal
- Remaining dry season months August to October to be monitored.

Relevance to sectors:

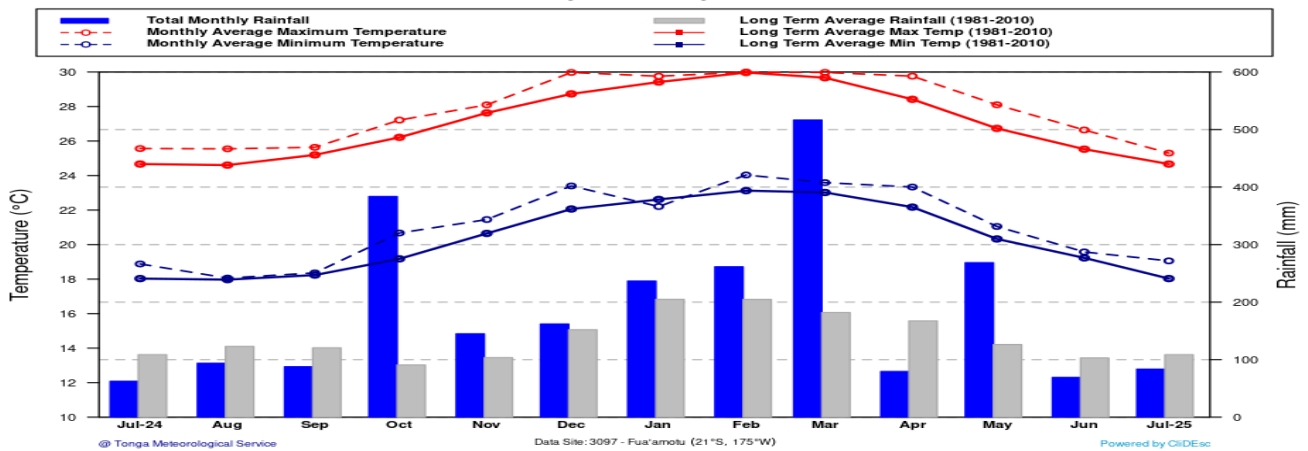


- Rainfall has been above normal in most of the island groups so far this year.

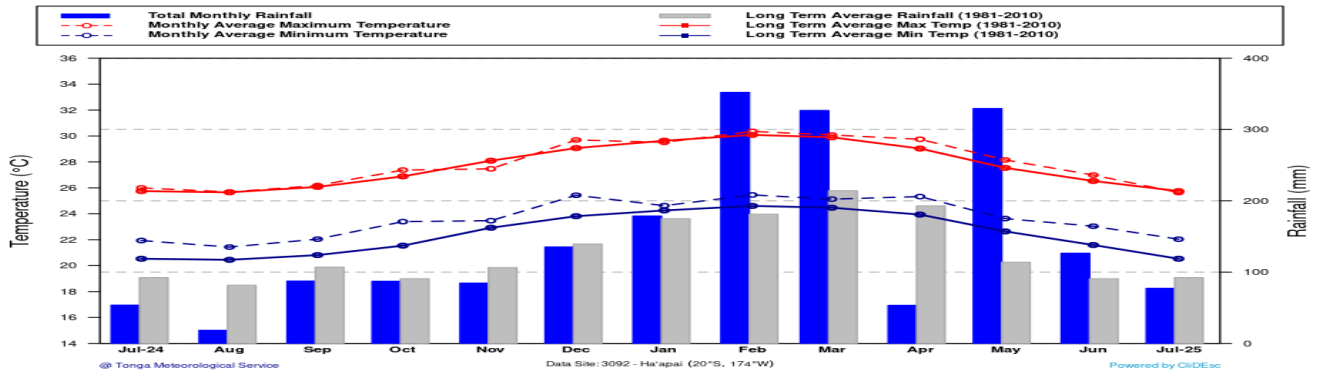


- Soils is likely to be wet and saturated moving into the growing season.

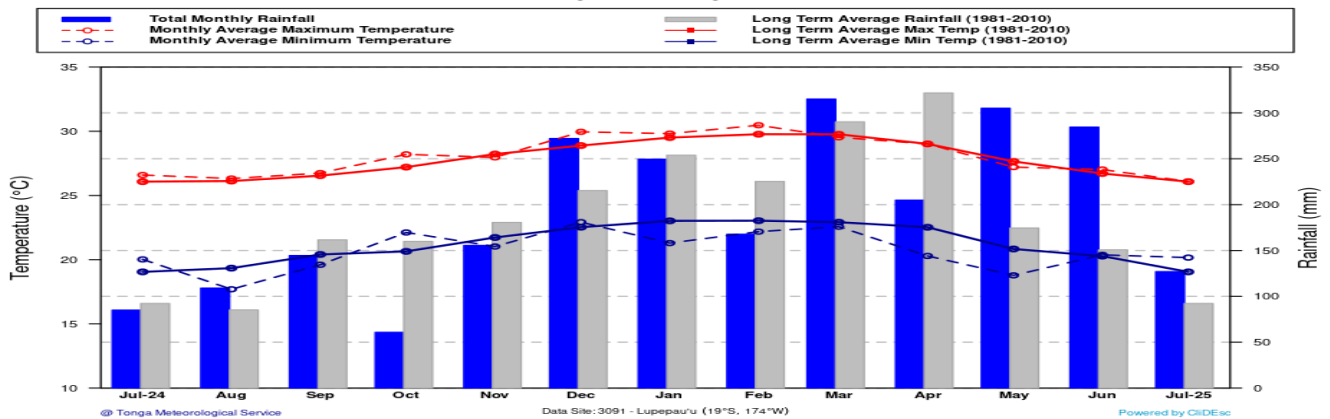
Fua'amotu (3097) - Temperature & Rainfall for the last 13 Months
(July, 2024 - July, 2025)



Ha'apai (3092) - Temperature & Rainfall for the last 13 Months
(July, 2024 - July, 2025)



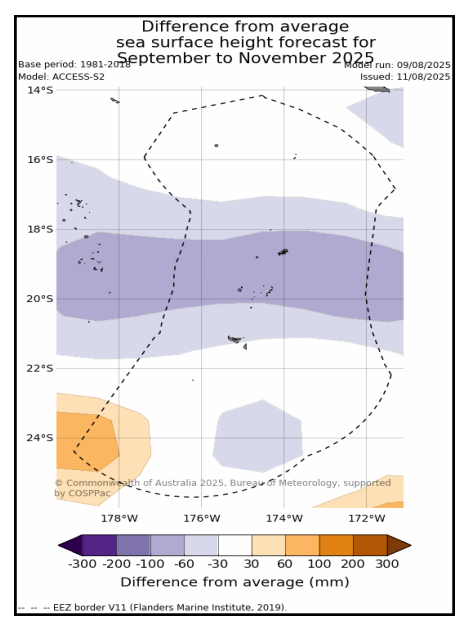
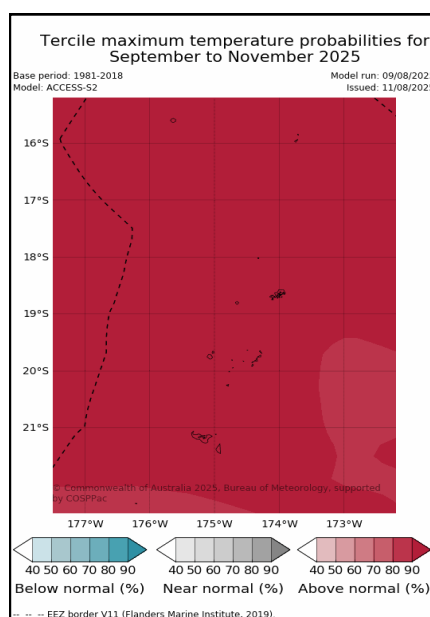
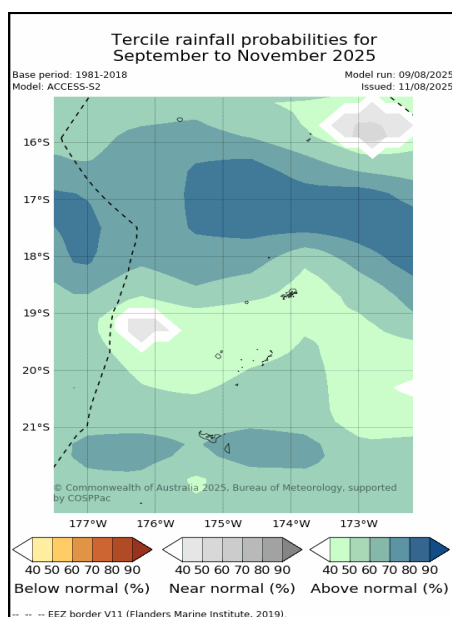
Lupepau'u (3091) - Temperature & Rainfall for the last 13 Months
(July, 2024 - July, 2025)



Climate outlook for September to November 2025

- Near normal to above normal rainfall for all of Tonga.
- Warmer than average maximum air temperature across the country.
- Sea level forecast shows 30 to 60mm below average heights across Ha'apai to Vava'u waters and average heights to south of Tongatapu and 'Eua waters and the Niuas.

Location	Rainfall Outlook September — November 2025		% Chance (This is the % chance that this outlook will occur).
Niuafo'ou	Above normal	416mm – 638mm	60 - 70
Niutoputapu	Above normal	392mm – 572mm	60 - 70
Vava'u	Near normal to above normal	363mm – 520mm	40 - 60
Ha'apai	Near normal to above normal	226mm – 390mm	40 - 60
Fua'amotu	Near normal to above normal	244mm – 412mm	40 - 60
Nuku'alofa	Near normal to above normal	238mm – 424mm	40 - 60
'Eua	Near normal to above normal	244mm – 412mm	40 - 60



Traditional knowledge indicators for the winter season.

- Shorter days and cooler temperatures act as a signal to the trees and plants around us to get ready for winter.
- When leaves of trees falls it indicates that winter is coming. Leaves fall off trees so that the trees can survive the winter.
- Rooster crows at night before 12 midnight is an indication that it will be a very cold night.
- When millipedes are observed inside the house, expect cooler temperatures.
- During the cool season you don't see cockroaches in the house like as usual in the warmer season, however when they do appear in the house it's a sign that rain is approaching soon and in a few hours time.

Tongan Calendar and traditional knowledge:

Parts of ‘Ao’ao ki masisiva, Tanumanga, Fufuu-ki-nekinanga, ’Uluenga (August –November 2025)

This is the season when yam tubers ready to be planted.

Tonga Lunar Calendar 2025

Lunar 2025	First quarter Moon	Full moon	Third quarter moon	New moon	First quarter moon
January	7	14	22	30	
February	5	13	21	28	
March	7	14	23	30	
April	5	13	21	28	
May	5	13	21	27	
June	3	11	19	25	
July	3	11	18	25	
August	2	9	16	23	31
September		8	14	22	30
October		7	14	22	30
November		6	12	20	28
December		5	12	20	28

Note:

It is still the dry season which started on 1st May 2025 and will last till end of October 2025. It is also called the cool dry season. On average, during this period we receive less rainfall than during the wet season.

According to the current status, previous 3 months rainfall and rainfall outlook (Refer Table1), it is advised to collect water when it rains and use it wisely. Public are advised to ensure that you stay alert at all times and get the latest weather forecast and warnings from the Met service. It is also advisable to seek advice from relevant authorities of sensitive sectors, e.g. Agriculture, Water, Health and the National Disaster Risk Management Office (NDRMO) on the best practices to save lives and property and minimize the effects of natural disaster.

The next Climate update will be issued second week of September 2025 or earlier

Disclaimer:

This summary is prepared as soon as possible following the end of the month, once climate data is received from recording stations around Tonga. Delays in data collection, communication and processing occasionally arise. While every effort is made to verify observational data, the Tonga Meteorological Service makes no statements, representations, or warranties about the accuracy or completeness of, and you should not rely on, any information contained in this report. Despite our best efforts, TMS makes no warranties that the information in this publication is free of numerical errors. TMS disclaims all responsibility and all liability (including without limitation, liability in negligence) for all expenses, losses, damages and costs you might incur as a result of the information being inaccurate or incomplete in any way, and for any reason. This information should be used as a guidance only. For further information about this forecast should be directed to the Director of the Tonga Meteorological Service, at P.O. Box 1380, Nuku'alofa. Or email at metstaff@met.gov.to Tel: (676) 0800638/ 7400062 or our website: <http://www.met.gov.to> for more information.